

NEW!

# Polycarbonate Enclosure Interior Mounting Solutions

THE ULTIMATE IN FLEXIBILITY AND STRENGTH FOR  
INSTALLING EQUIPMENT IN POLYCARBONATE ENCLOSURES.

New, innovative mounting and support options are designed for OEMs and Installers and are used with our polycarbonate enclosures to add installation flexibility, increase mounting space and provide solutions for customer installation of heavy components in non-metallic enclosures.

## MARKETS AND INDUSTRIES:

- Ideal for Non-Hazardous Industrial and Commercial OEM market segments
- Industries such as O&G, Electrical Control, Water Wastewater, Manufacturing, Communications, Wireless & Remote Monitoring

## MATERIALS:

- Aluminum



## WEIGHT DISTRIBUTION SHELF

### APPLICATIONS:

- This innovative weight distribution shelf provides an extremely rugged support system when adding heavy equipment in polycarbonate enclosures. Ideal for support when adding a power supply, battery, or heavy equipment.

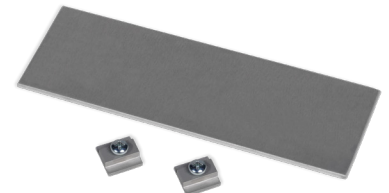
### BENEFITS:

- Improves installation quality by reducing potential for bottom wall deflection
- Reduces risk of enclosure and equipment maintenance and replacement costs due to damage from added weight

### INNOVATIVE FEATURES:

- Aluminum shelf supported by enclosure side walls reduces risk of deflection of the enclosure bottom wall when subjected to increased weight load
- Available in 7 SKUs designed for use with our polycarbonate enclosure sizes from 10"x10" to 24"x24"
- Constructed from strong, lightweight, corrosion resistant aluminum
- Available as standalone SKUs or included with our polycarbonate enclosures\*
- Fastening hardware included

\*When ordered included with the enclosure, shelves are shipped unassembled and included in the enclosure carton.



## SIDE PANEL KITS

### APPLICATIONS:

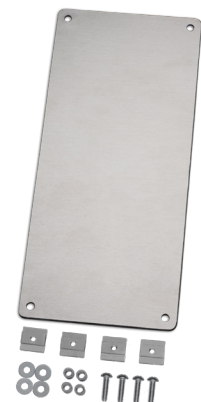
- Aluminum side panels allow for mounting of components on enclosure walls, increase mounting space and flexibility, and reduce the need to increase the enclosure size to accommodate additional components—enabling customers to use smaller enclosures in applications requiring tight spacing

### BENEFITS:

- Increases customer installation flexibility—equipment can be mounted on multiple sides of the enclosure, in addition to the traditional enclosure back wall
- Lowers cost by reducing the need to increase the enclosure size when more mounting space is required
- Reduces engineering labor (maintains enclosure mounting footprint)

### INNOVATIVE FEATURES:

- Available in 9 SKUs designed for use with our polycarbonate enclosure sizes 6"x6" to 24"x24"
- Corrosion resistant slot nut fastening hardware kit included
- Simple and easy installation with the use of common tools—simply install, position, and secure the side panel using the provided slot nuts which fit perfectly in the innovative enclosure T-Slots.



## CATALOG NUMBERS AND DIMENSIONS:



### Individual Weight Distribution Shelves for Polycarbonate Enclosures

CATALOG #	SHELF WIDTH	SHELF DEPTH	FITS ENCLOSURE TYPE
<b>WD105</b>	10"	5"	PC1010
<b>WD106</b>	10"	6"	PC1210
<b>WD12</b>	12"	6"	PC1412
<b>WD14</b>	14"	8"	PC1614
<b>WD1610</b>	16"	10"	PC1816
<b>WD168</b>	16"	8"	PC2016
<b>WD24</b>	24"	10"	PC2424

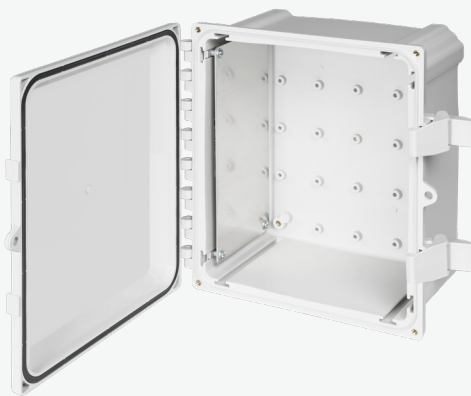
\*Fastening hardware included

### Polycarbonate Enclosure with Weight Distribution Shelf Included in Carton

CATALOG #	POLYCARBONATE ENCLOSURE DIMENSIONS	SHELF INCLUDED
<b>PCWD1010</b>	10" x 10" x 6"	WD105
<b>PCWD1210</b>	12" x 10" x 6"	WD106
<b>PCWD1412</b>	14" x 12" x 6"	WD12
<b>PCWD1614</b>	16" x 14" x 8"	WD14
<b>PCWD1816</b>	18" x 16" x 10"	WD1610
<b>PCWD2016</b>	20" x 16" x 8"	WD168
<b>PCWD2424</b>	24" x 24" x 10"	WD24

\*Add CC to end of Catalog # for polycarbonate enclosure with clear cover

### Individual Side Panel Kits for Polycarbonate Enclosures



CATALOG #	SIDE PANEL SIZE	FITS (ENCLOSURE LONG SIDE)	FITS (ENCLOSURE SHORT SIDE)
<b>SP6</b>	6"	PC606	PC806
<b>SP8</b>	8"	PC808	PC808, PC1008
<b>SP10</b>	10"	PC1010, PC100806	PC1010
<b>SP12</b>	12"	PC1210	PC1412
<b>SP14</b>	14"	PC1412	PC1614
<b>SP16</b>	16"	PC1614	PC1816, PC2016
<b>SP18</b>	18"	PC1816	n/a
<b>SP20</b>	20"	PC2016	n/a
<b>SP24</b>	24"	PC2424	n/a

\*Mounting slot nut hardware included in kit



500 Maple Street, Belding, MI 48809  
E: CSR@robroyenclosures.com P: 616.794.0700