

Enclosures **N Series Freestanding Control Tower**

Fiberglass Enclosure 72 x 48 x 18 Inches N Series Large Freestanding Double Door with Stainless Steel Hinged, Latched Opaque Cover



**Catalog
Number**

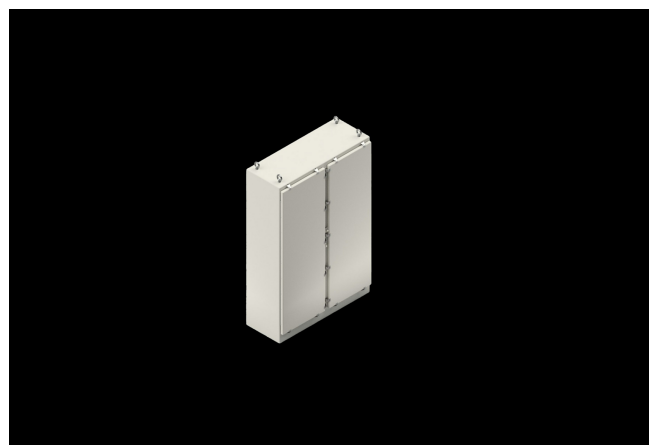
N724818FSDDHWT

UPC

785928558184

DESCRIPTION

72H x 48W x 18D Inches N Series Double Door Freestanding Fiberglass Enclosure with an "HWT" Opaque Cover (Type 4X, Stainless Steel Hinged, Latched Down) is designed to accommodate electrical, electronic, instrumentation and mechanical controls indoors and outdoors where corrosion resistant watertight enclosures are needed to provide protection against windblown dust and rain, splashing and hose directed water. The "N" designation reflects a NEMA range series of large capacity enclosures.



APPLICATION

- Designed to accommodate electrical; electronic; instrumentation and mechanical controls
- Double door design is perfect for tight areas vs. a larger single door
- Provides protection against windblown dust and rain; splashing; and hose-directed water
- Ideal for high temperature ranges and corrosion resistance

- when used in oil fields; mining; oil platforms;
water/wastewater and general processing controls
- Maximize available space for electrical; hydraulic; or mechanically controlled circuits

FEATURES

- Opaque Cover
- Fiberglass reinforced; polyester material
- Memory retaining; polyurethane gasket
- Integral mounting feet
- Glassed in enclosure lifting rings and panel mounting studs
- 304 stainless steel hardware
- Molded-in panel mounting inserts or studs
- High temperature; flame retardant; noncorrosive; environmental designs
- Padlockable
- Manufactured with SolarGuard®, Stahlin's proprietary formulation of non-halogenated fiberglass, offering superior resistance to outdoor exposure, chemicals and flames.
- Back Panels Available for all sizes

General Information

| | |
|-------------------------------|----------------------|
| Color | Gray |
| Cover Type | Opaque |
| Mounting Type | Freestanding |
| Material | Fiberglass |
| Back Panel Screw Size | 3/8-16 Stud |
| Back Panel Recommended Torque | 28-32 in-lbs |
| Metal Inserts | 304 SS |
| Hinge Material | 304 SS |
| Latch Material | 304 SS |
| Gasket Material | Neoprene PORON strip |
| Country of Origin | USA |

DIMENSIONS

| | |
|-------------------|---------|
| Height (in) | 72.5 |
| Width (in) | 48.5 |
| Depth (in) | 19.4 |
| Height (mm) | 1,841.5 |
| Width (mm) | 1,231.9 |
| Depth (mm) | 492.3 |
| Usable Depth (in) | 17.9 |
| Usable Depth (mm) | 454.2 |

STANDARDS

| | |
|-----------------------------------|---------------------------|
| NEMA 10250; UL 50; UL 50e; UL508A | cULus Listed File #E64358 |
| CSA Std. C22.2 | cULus Listed File #E64358 |
| Type | 1; 3; 3R; 4; 4X; 12 |
| IEC 60529; UL Listed #E362920 | IP66 |
| Temperature Range °F | -76°F to +274°F |
| Temperature Range °C | -60°C to +134°C |
| IEC 62262 Impact Rating Listed | IK10 per File #E362920 |
| Flammability Rating | UL94-5VA |
| NFPA No. 101 Flame Spread | Class A(1) |
| Outdoor Exposure UL746c | (f1) Rated |
| CE | Certified |