

Enclosures **PolySlim Series**

Polycarbonate Low Profile Enclosure 20 x 16 x 4 Inches PolySlim™ Series with Clear Cover and Stainless Steel Latches



**Catalog
Number**

PC201604CCSS

UPC

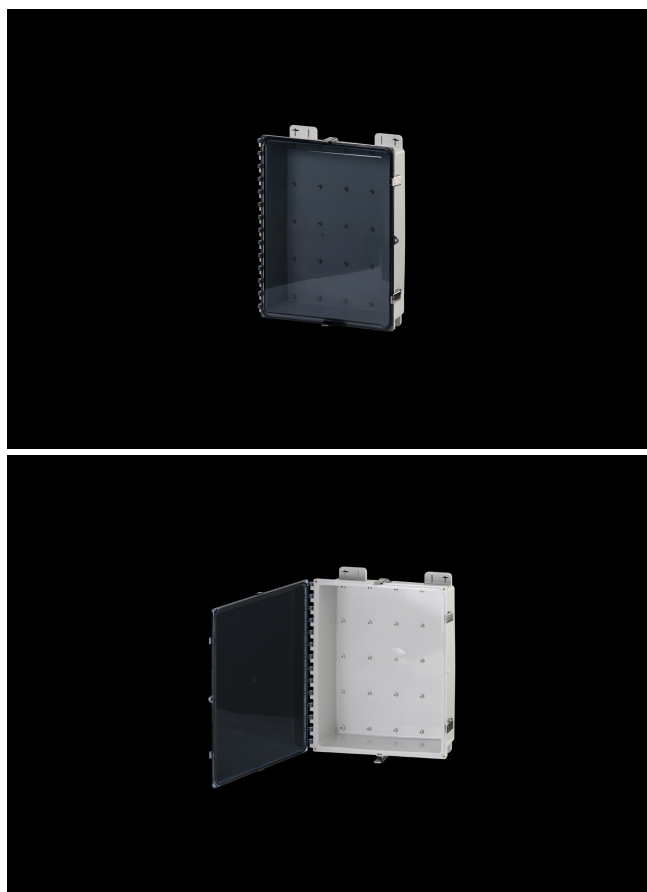
785928581502

DESCRIPTION

20H X 16W X 4D Inches PolySlim™ Series polycarbonate enclosure is a high performance, shallow depth, polycarbonate enclosure applicable for heavy industrial conditions, but with a refined style suitable for commercial, industrial and OEM design applications. PolyStar Series enclosures are rain-tight and watertight rated for use in both interior and exterior applications. This "HPL" configuration features a clear cover with stainless steel latches that is hinged, latched and padlockable.

APPLICATION

- For use in applications requiring shallow depth, low-profile enclosures
- Ideal for housing wireless access points, remote monitoring, and low-profile electrical control applications.
- Suitable for heavy industrial; commercial; and OEM applications
- Used to house electrical and electronic controls;



instruments; and components

- Used indoors or outdoors
- Used in highly corrosive areas
- Provides protection against rain; sleet; snow; splashing water; hose-directed water; submersion; sun/UV and flame protection.

FEATURES

- Low-profile design provides the perfect depth for smaller components while maintaining a large footprint to accommodate interior mounted antennae
- Non-metallic material construction with optional ABS Back Panel to allow unimpeded transmission of wireless signals
- Hinges do not penetrate enclosure
- Easy to remove cover
- High performance inserts
- Integrated padlock hasp
- Smooth Side Wall construction for easy fitting mounting and alignment
- Molded in bosses for attachment of DIN rail
- Molded-in Mounting Feet / Flange Provided
- Single SKU with multiple cover attachment options
- Back Panels Available for all sizes

General Information

Color	Gray
Cover Type	Clear
Mounting Type	Wall Mount
Material	Polycarbonate
Back Panel Screw Size	#10-32 x 3/8
Back Panel Recommended Torque	16-20 in-lbs
Back Panel Screw Material	Zinc Plated
Cover Screw Size	#10-32 x 5/8
Cover Screw Recommended Torque	20-24 in-lbs
Cover Screw Material	304 SS
Mounting Flange Screw Size	1/4-20 x 1/2
Mounting Flange Screw Recommended Torque	10-14 in-lbs
Installation Mounting Torque	25-30 in-lbs Max
Metal Inserts	Brass
Hinge Material	Integral Polycarbonate
Latch Material	316 SS
Gasket Material	Poured In Place (PIP) Polyurethane Seamless
Country of Origin	USA

DIMENSIONS

Height (in)	20.0
Width (in)	16.0
Depth (in)	4.0
Height (mm)	508.0
Width (mm)	406.4
Depth (mm)	101.6
Usable Depth (in)	5.1
Usable Depth (mm)	130.6

STANDARDS

NEMA 10250; UL 50; UL 50e; UL508A	cULus Listed File #E319779
CSA Std. C22.2	cULus Listed File #E319779
Type	1; 3R; 4; 4X; 12
IEC 60529; UL Listed #E362920	IP66
Temperature Range °F	-40°F to +248°F
Temperature Range °C	-40°C to +120°C
Flammability Rating	UL94-5VA
Outdoor Exposure UL746c	(f1) Rated
CE	Certified