

Enclosures **PushButton Series**

## **Fiberglass Enclosure 6 x 6 x 4 Inches Push Button Series 4 Hole 30 mm with Opaque Lift Off Cover**



**Catalog  
Number**

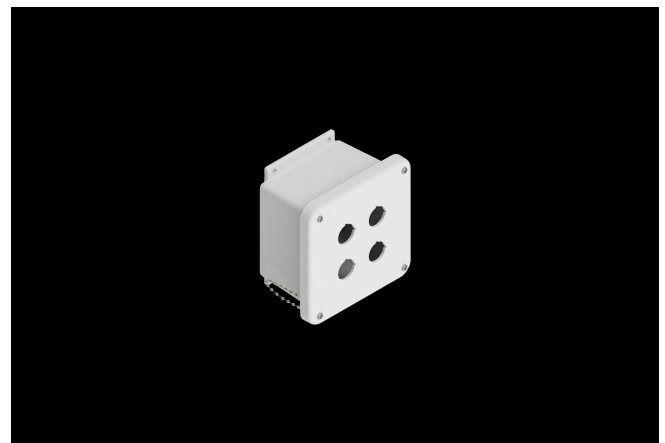
**F4PBW**

**UPC**

**785928200755**

### **DESCRIPTION**

6H x 6W x 4D Inches Push Button Series Fiberglass Enclosure is a multi-hole enclosure is ideal for high density push button mounting and can accommodate up to nine operators on a single cover. It also features an integral flange mount and back panel capabilities. The multi-hole design is compatible with 30mm configuration components.



### **APPLICATION**

- For use in many MRO and OEM applications
- Slim design allows easy installation of pushbuttons and switches in machine control applications with tight or dense space requirements
- Used in compact or portable control systems or for use as an Operator Interface Enclosure in both indoor and outdoor environments
- Used in common pushbutton and indicator light applications
- Used indoors or outdoors

## FEATURES

---

- Memory retaining continuous polyurethane gasket
- Captive stainless steel cover screws
- Chemically resistant fiberglass reinforced polyester
- Submersible; non corrosive; environmental design
- High Impact Resistance
- Manufactured with SolarGuard®, Stahlin's proprietary formulation of non-halogenated fiberglass, offering superior resistance to outdoor exposure, chemicals and flames.
- Back Panels Available for all sizes

## General Information

---

Color	Gray
Cover Type	Push Button
Mounting Type	Wall Mount
Material	Fiberglass
Back Panel Screw Size	#10-32 x 3/8
Back Panel Recommended Torque	16-20 in-lbs
Back Panel Screw Material	304 SS
Cover Screw Size	#10-24 x 3/4
Cover Screw Recommended Torque	20-24 in-lbs
Cover Screw Material	304 SS
Installation Mounting Torque	45 in-lbs Max
Metal Inserts	Brass
Gasket Material	Poured In Place (PIP) Polyurethane Seamless
Country of Origin	USA

## DIMENSIONS

Height (in)	6.0
Width (in)	6.0
Depth (in)	4.0
Height (mm)	152.4
Width (mm)	152.4
Depth (mm)	101.6
Usable Depth (in)	4.0
Usable Depth (mm)	101.0

## STANDARDS

NEMA 10250; UL 50; UL 50e; UL508A	cULus Listed File #E64358
CSA Std. C22.2	cULus Listed File #E64358
Type	1; 3R; 4; 4X; 6P; 12
IEC 60529; UL Listed #E362920	IP66; IP67; IP68
UL1741	UL Listed File #E333478
Plenum Space UL2043	Compliant
Temperature Range °F	-76°F to +274°F
Temperature Range °C	-60°C to +134°C
IEC 62262 Impact Rating Listed	IK10 per File #E362920
Flammability Rating	UL94-5VA
NFPA No. 101 Flame Spread	Class A(1)
Outdoor Exposure UL746c	(f1) Rated
CE	Certified