

Enclosures **PolyStar Series**

Polycarbonate Enclosure 8 x 6 x 4 Inches PolyStar Series with Clear Cover and Flange Kit



**Catalog
Number**

PCF806CC

UPC

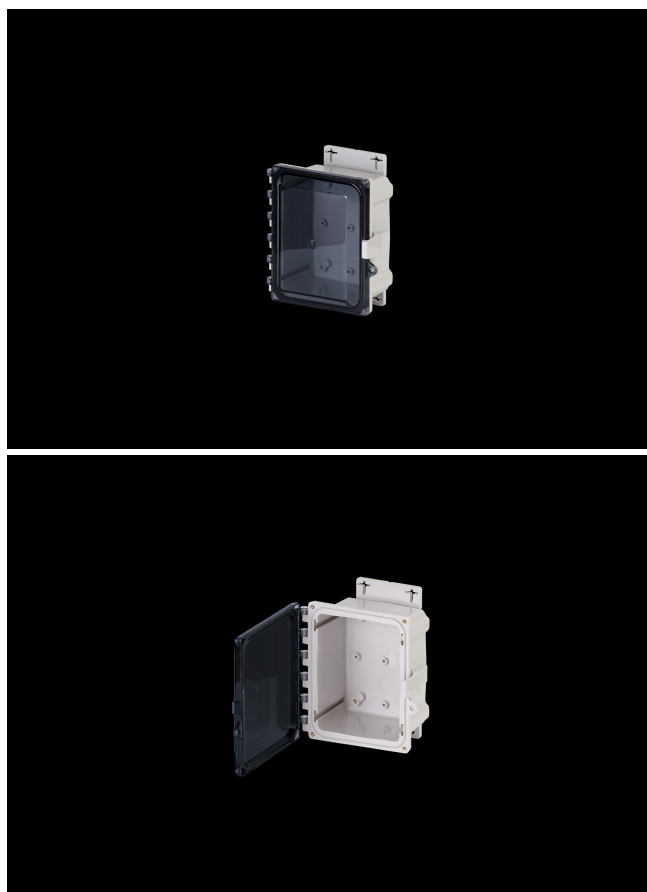
785928580383

DESCRIPTION

8H x 6W x 4D Inches PolyStar™ Series polycarbonate enclosure with mounting flanges are designed as a robust mounting option. They are ideal for non-hazardous industrial and commercial applications and are commonly used in electrical control, measurement and monitoring, security, oil and gas, manufacturing, and communications. They feature an innovative mounting cross which allows for multiple screw positions. Additionally, the flange can be mounted on the top and bottom, or sides of the enclosure. They feature a water-shedding flange design contains a built-in radius to prevent accumulation of water. It features a clear cover which is hinged, latched and padlockable.

APPLICATION

- Suitable for heavy industrial; commercial; and OEM applications
- Used to house electrical and electronic controls;



- instruments; and components
- Used indoors or outdoors
 - Used in highly corrosive areas
 - Provides protection against rain; sleet; snow; splashing water; hose-directed water; submersion; sun/UV and flame protection.

FEATURES

- Latches and hinges do not penetrate enclosure
- Easy to remove lid
- High performance inserts
- Integrated padlock hasp
- Flush-fit side mount swing panel and DIN rail system
- Molded in bosses
- Robust Mounting Flange Included
- Single SKU with multiple cover attachment options
- Back Panels Available for all sizes

General Information

| | |
|------------------------------------------|------------------------------------------------|
| Color | Gray |
| Cover Type | Clear |
| Mounting Type | Wall Mount |
| Material | Polycarbonate |
| Back Panel Screw Size | #10-32 x 3/8 |
| Back Panel Recommended Torque | 16-20 in-lbs |
| Back Panel Screw Material | Zinc Plated |
| Cover Screw Size | #10-32 x 5/8 |
| Cover Screw Recommended Torque | 20-24 in-lbs |
| Cover Screw Material | 304 SS |
| Mounting Flange Screw Size | 1/4-20 x 1/2 |
| Mounting Flange Screw Recommended Torque | 10-14 in-lbs |
| Installation Mounting Torque | 25-30 in-lbs Max |
| Metal Inserts | Brass |
| Hinge Material | Integral Polycarbonate |
| Latch Material | Polycarbonate |
| Gasket Material | Poured In Place (PIP) Polyurethane Seamless |
| Country of Origin | USA |

DIMENSIONS

| | |
|-------------|-------|
| Height (in) | 8.0 |
| Width (in) | 6.0 |
| Depth (in) | 4.0 |
| Height (mm) | 203.0 |
| Width (mm) | 152.0 |
| Depth (mm) | 102.0 |

STANDARDS

NEMA 10250; UL 50; UL 50e; cULus Listed File
UL508A #E319779

CSA Std. C22.2 cULus Listed File
#E319779

Type 1; 3R; 4; 4X; 6P; 12

IEC 60529; UL Listed IP66; IP68
#E362920

Temperature Range °F -40°F to +248°F

Temperature Range °C -40°C to +120°C

Flammability Rating UL94-5VA

Outdoor Exposure UL746c (f1) Rated

CE Certified