

Enclosures **N Series Wall Mount**

## **Fiberglass Enclosure 30 x 24 x 7 Inches N Series with Stainless Steel Hinged, Latched Opaque Cover**



**Catalog  
Number**

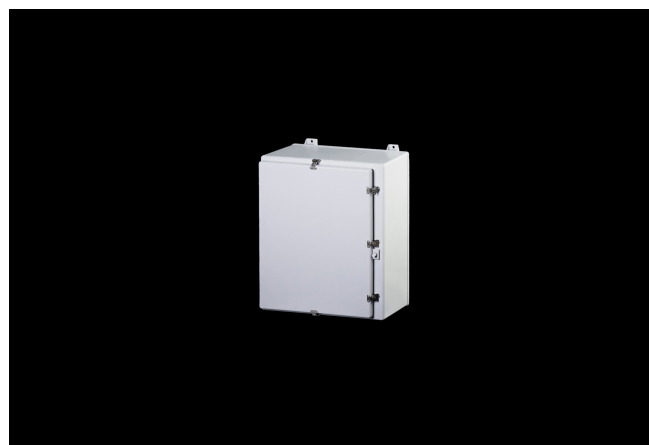
**N30247**

**UPC**

**785928220708**

### **DESCRIPTION**

30H x 24W x 7D Inches N Series Fiberglass Enclosure with a "Type 12" Opaque Cover (Type 12, Stainless Steel Hinged, Latched Down) is designed to accommodate electrical, electronic, instrumentation and mechanical controls indoors and outdoors where corrosion resistant watertight enclosures are needed. Type 12 enclosures are intended for indoor use primarily to provide a degree of protection against dust, falling dirt, and dripping non-corrosive liquids. The "N" designation reflects a NEMA range series of large capacity enclosures.



### **APPLICATION**

- Designed to accommodate electrical; electronic; instrumentation and mechanical controls
- Intended for indoor use primarily to provide a degree of protection against dust, falling dirt and dripping non-corrosive liquids.
- Ideal for high temperature ranges and corrosion resistance

- when used in oil fields; mining; oil platforms;  
water/wastewater and general processing controls
- Maximize available space for electrical; hydraulic; or mechanically controlled circuits

## FEATURES

- Opaque Cover
- Fiberglass reinforced; polyester material
- Memory retaining; polyurethane gasket
- 300 series stainless steel hardware
- Integral mounting feet
- Molded-in panel mounting inserts or studs
- High temperature; flame retardant; noncorrosive; environmental designs
- Padlockable
- Manufactured with SolarGuard®, Stahlin's proprietary formulation of non-halogenated fiberglass, offering superior resistance to outdoor exposure, chemicals and flames.
- Back Panels Available for all sizes

## General Information

Color	Gray
Cover Type	Opaque
Mounting Type	Wall Mount
Material	Fiberglass
Back Panel Screw Size	3/8-16 x 1/2
Back Panel Recommended Torque	28-32 in-lbs
Back Panel Screw Material	304 SS
Installation Mounting Torque	80 in-lbs Max
Metal Inserts	Brass
Hinge Material	304 SS
Latch Material	304 SS
Gasket Material	Poured In Place (PIP) Polyurethane Seamless
Country of Origin	USA

## DIMENSIONS

Height (in)	33.4
Width (in)	26.3
Depth (in)	8.8
Height (mm)	848.6
Width (mm)	668.5
Depth (mm)	223.8
Usable Depth (in)	7.1
Usable Depth (mm)	181.0

## STANDARDS

NEMA 10250; UL 50; UL 50e; UL508A	cULus Listed File #E64358
CSA Std. C22.2	cULus Listed File #E64358
Type	1; 12
UL1741	UL Listed File #E333478
Temperature Range °F	-76°F to +274°F
Temperature Range °C	-60°C to +134°C
IEC 62262 Impact Rating Listed	IK10 per File #E362920
Flammability Rating	UL94-5VA
NFPA No. 101 Flame Spread	Class A(1)
Outdoor Exposure UL746c	(f1) Rated
CE	Certified