

Enclosures **DuraBoxx Series**

## Fiberglass Enclosure 3 x 4 x 2 Inches DuraBoxx Series Shallow with Opaque Lift Off Cover



**Catalog  
Number**

**D342W**

**UPC**

**785928942853**

### DESCRIPTION

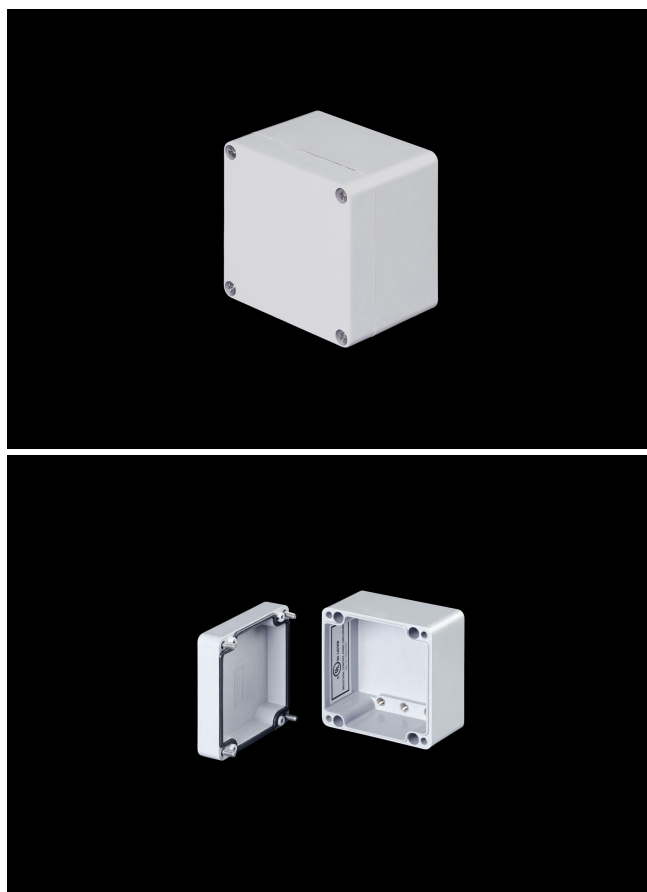
3H x 4W x 2D Inches DuraBoxx Series Shallow Fiberglass Enclosure are suited for indoor or outdoor environments in both commercial and industries environments such as mining, oil, gas, wastewater treatment and petro-chem. Their flush cover design with captive lid screws makes them well suited for high-end electronic applications such as wireless communications and operator interfaces.

### APPLICATION

- With its sleek design; shallow depths and flush cover these enclosures are suited for high-end electronic applications
- Used indoors or outdoors
- Used in highly corrosive areas

### FEATURES

- Flat opaque cover with captive cover screws



- DIN rail mounting capabilities
- Back Panels Available for all sizes

## General Information

Color	Gray
Cover Type	Opaque
Mounting Type	Wall Mount
Material	Fiberglass
Back Panel Screw Size	M6 x 9.5mm
Back Panel Recommended Torque	16-20 in-lbs
Back Panel Screw Material	304 SS
Cover Screw Size	M6-1.0 x 35mm
Cover Screw Recommended Torque	20-24 in-lbs
Cover Screw Material	304 SS
Mounting Foot Screw Recommended Torque	20-24 in-lbs
Installation Mounting Torque	20-24 in-lbs Max
Metal Inserts	Brass
Gasket Material	Poured In Place (PIP) Polyurethane Seamless
Country of Origin	India

## DIMENSIONS

Height (in)	3.0
Width (in)	4.3
Depth (in)	2.2
Height (mm)	74.9
Width (mm)	110.0
Depth (mm)	56.4
Usable Depth (in)	1.5
Usable Depth (mm)	39.0

## STANDARDS

NEMA 10250; UL 50; UL 50e; cULus Listed File UL508A	#E64358
CSA Std. C22.2	File LR069014
Type	1; 3; 3S; 4; 4X; 6; 6P; 12
IEC 60529; UL Listed #E362920	IP66; IP67; IP68
Temperature Range °F	-26°F to +257°F
Temperature Range °C	-32°C to +125°C
Flammability Rating	UL94-V0
Outdoor Exposure UL746c	(f1) Rated
CE	Certified