

Enclosures **N Series Wall Mount**

## **Fiberglass Enclosure 36 x 48 x 12 Inches N Series Double Door with Hinged, Through Door Latched Opaque Cover**



**Catalog  
Number**

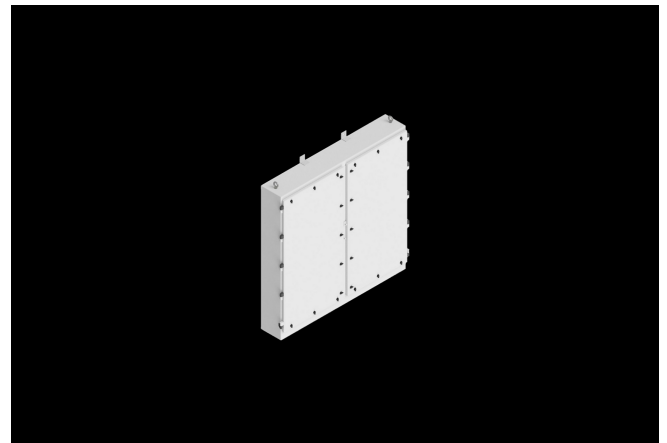
**N364812DDFHLWT**

**UPC**

**785928581533**

### **DESCRIPTION**

36H x 48W x 12D Inches N Series Double Door Double Door Fiberglass Enclosure with an "FHLWT" Opaque Cover (Type 4X, Fiberglass Hinged, Through-the-Door Latches) is designed to accommodate electrical, electronic, instrumentation and mechanical controls indoors and outdoors where corrosion resistant watertight enclosures are needed to provide protection against windblown dust and rain, splashing and hose directed water. The "N" designation reflects a NEMA range series of large capacity enclosures.



### **APPLICATION**

- Designed to accommodate electrical; electronic; instrumentation and mechanical controls
- Double door design is perfect for tight areas vs. a larger single door
- Provides protection against windblown dust and rain; splashing; and hose-directed water
- Ideal for high temperature ranges and corrosion resistance

- when used in oil fields; mining; oil platforms;  
water/wastewater and general processing controls
- Maximize available space for electrical; hydraulic; or mechanically controlled circuits

## FEATURES

- Opaque Cover
- Fiberglass reinforced; polyester material
- Memory retaining; polyurethane gasket
- 300 series stainless steel hardware
- Integral mounting feet
- Molded-in panel mounting inserts or studs
- High temperature, flame retardant, noncorrosive, environmental designs
- Padlockable
- Manufactured with SolarGuard®, Stahlin's proprietary formulation of non-halogenated fiberglass, offering superior resistance to outdoor exposure, chemicals and flames.
- Back Panels Available for all sizes

## General Information

Color	Gray
Cover Type	Opaque
Mounting Type	Wall Mount
Material	Fiberglass
Back Panel Screw Size	3/8-16 Stud
Back Panel Recommended Torque	28-32 in-lbs
Back Panel Screw Material	304 SS
Installation Mounting Torque	80 in-lbs Max
Metal Inserts	Brass
Hinge Material	Glass Filled PBT
Latch Material	304 SS
Gasket Material	Neoprene PORON strip
Country of Origin	USA

## DIMENSIONS

Height (in)	39.5
Width (in)	48.5
Depth (in)	13.6
Height (mm)	1,003.3
Width (mm)	1,231.9
Depth (mm)	345.9

## STANDARDS

NEMA 10250; UL 50; UL 50e; UL508A	cULus Listed File #E64358
CSA Std. C22.2	cULus Listed File #E64358
Type	1; 3; 3R; 4; 4X; 12
IEC 60529; UL Listed #E362920	IP66
UL1741	UL Listed File #E333478
Temperature Range °F	-76°F to +274°F
Temperature Range °C	-60°C to +134°C
IEC 62262 Impact Rating Listed	IK10 per File #E362920
Flammability Rating	UL94-5VA
NFPA No. 101 Flame Spread	Class A(1)
Outdoor Exposure UL746c	(f1) Rated
CE	Certified