

Enclosures **Diamond Shield Series**

## **Fiberglass Enclosure 10 x 8 x 6 Inches Diamond Shield Series with Hinged, 2 Lockable Link Latches Opaque Cover**



**Catalog  
Number**

**DS100806HLL**

**UPC**

**785928907234**

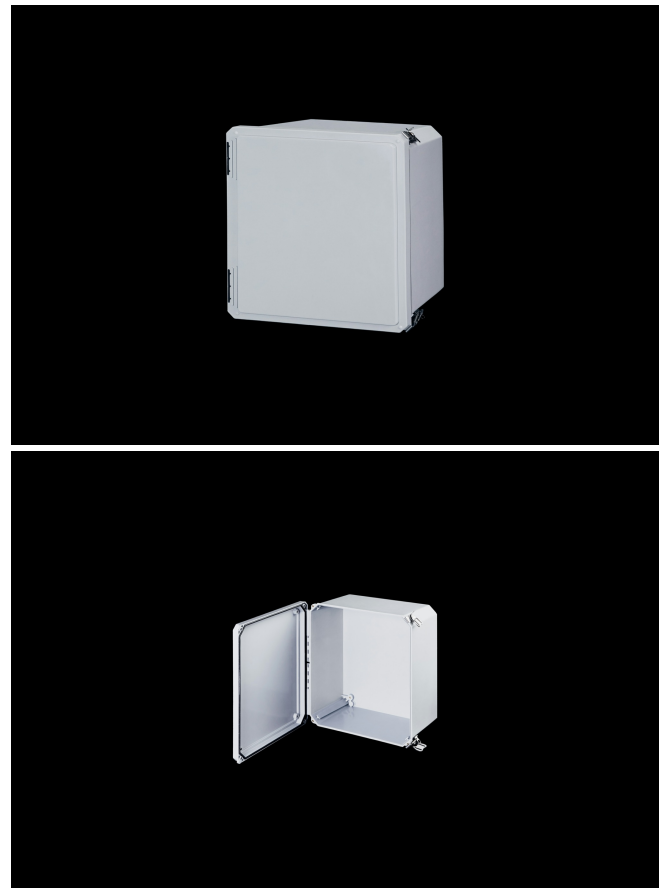
### **DESCRIPTION**

10H x 8W x 6D Inches Diamond Shield Series Fiberglass Enclosure with an "HLL" Opaque Cover (Hinged, 2 Lockable Link Latches) is designed for high-end electronics, harsh corrosive environments and industrial applications both indoors and outdoors. The series offers an additional feature of panel mounting in the cover for use as an operator interface in industrial equipment control stations where required.

### **APPLICATION**

- Suited for high-end and harsh industrial applications
- Used indoors or outdoors
- Innovative internal panel management capabilities
- Used in highly corrosive areas
- Panel mounting in the cover for use as an Operator Interface Enclosures in industrial equipment control stations

### **FEATURES**



- 
- Opaque Cover
  - Maximum visibility to raised panels and control boxes
  - High temperature; flame retardant; non corrosive; environmental designs
  - Results in an environmentally sealed; environmentally sound space
  - High impact resistance
  - Double insulated material no incidental electrical contact
  - Solid construction in a lightweight design
  - UV resistant
  - Manufactured with SolarGuard®, Stahlin's proprietary formulation of non-halogenated fiberglass, offering superior resistance to outdoor exposure, chemicals and flames.
  - Back Panels Available for all sizes

## General Information

Color	Gray
Cover Type	Opaque
Mounting Type	Wall Mount
Material	Fiberglass
Back Panel Screw Size	#10-32 x 3/8
Back Panel Recommended Torque	16-20 in-lbs
Back Panel Screw Material	304 SS
Cover Screw Size	#10-32 x 1-1/4
Cover Screw Recommended Torque	20-24 in-lbs
Cover Screw Material	304 SS
Mounting Foot Screw Size	#10-32 x 7/16
Mounting Foot Screw Recommended Torque	22-25 in-lbs
Installation Mounting Torque	45 in-lbs Max
Metal Inserts	Brass
Hinge Material	304 SS
Latch Material	304 SS
Gasket Material	Poured In Place (PIP) Polyurethane Seamless
Country of Origin	USA

## DIMENSIONS

Height (in)	11.4
Width (in)	9.8
Depth (in)	6.3
Height (mm)	290.1
Width (mm)	248.9
Depth (mm)	160.3
Usable Depth (in)	5.6
Usable Depth (mm)	142.0

## STANDARDS

NEMA 10250; UL 50; UL 50e; UL508A	cULus Listed File #E64358
CSA Std. C22.2	cULus Listed File #E64358
Type	1; 3; 3S; 4; 4X; 12; 13
IEC 60529; UL Listed #E362920	IP66
UL1741	UL Listed File #E333478
Temperature Range °F	-76°F to +274°F
Temperature Range °C	-60°C to +134°C
IEC 62262 Impact Rating Listed	IK10 per File #E362920
Flammability Rating	UL94-5VA
NFPA No. 101 Flame Spread	Class A(1)
Outdoor Exposure UL746c	(f1) Rated
CE	Certified