

Enclosures **N Series Wall Mount**

## **Fiberglass Enclosure 30 x 20 x 12 Inches N Series with Stainless Steel Hinged, Latched Opaque Cover**



**Catalog  
Number**

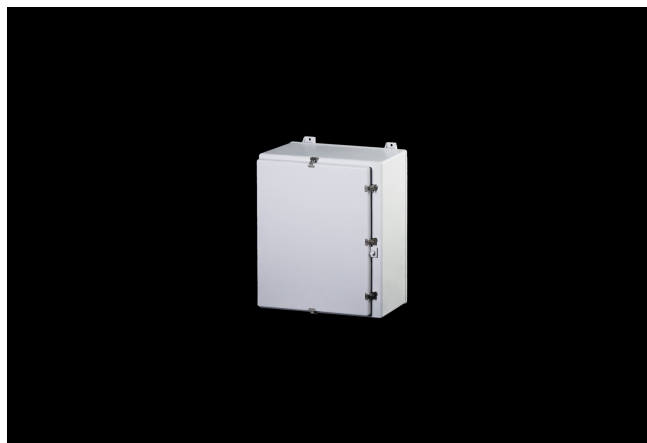
**N302012**

**UPC**

**785928224201**

### **DESCRIPTION**

30H x 20W x 12D Inches N Series Fiberglass Enclosure with a "Type 12" Opaque Cover (Type 12, Stainless Steel Hinged, Latched Down) is designed to accommodate electrical, electronic, instrumentation and mechanical controls indoors and outdoors where corrosion resistant watertight enclosures are needed. Type 12 enclosures are intended for indoor use primarily to provide a degree of protection against dust, falling dirt, and dripping non-corrosive liquids. The "N" designation reflects a NEMA range series of large capacity enclosures.



### **APPLICATION**

- Designed to accommodate electrical; electronic; instrumentation and mechanical controls
- Intended for indoor use primarily to provide a degree of protection against dust, falling dirt and dripping non-corrosive liquids.
- Ideal for high temperature ranges and corrosion resistance

- when used in oil fields; mining; oil platforms;  
water/wastewater and general processing controls
- Maximize available space for electrical; hydraulic; or mechanically controlled circuits

## FEATURES

- Opaque Cover
- Fiberglass reinforced; polyester material
- Memory retaining; polyurethane gasket
- 300 series stainless steel hardware
- Integral mounting feet
- Molded-in panel mounting inserts or studs
- High temperature; flame retardant; noncorrosive; environmental designs
- Padlockable
- Manufactured with SolarGuard®, Stahlin's proprietary formulation of non-halogenated fiberglass, offering superior resistance to outdoor exposure, chemicals and flames.
- Back Panels Available for all sizes

## General Information

|                               |  |
|-------------------------------|--|
| Color                         | Gray   |
| Cover Type                    | Opaque   |
| Mounting Type                 | Wall Mount                                     |
| Material                      | Fiberglass                                     |
| Back Panel Screw Size         | 3/8-16 x 1/2                                   |
| Back Panel Recommended Torque | 28-32 in-lbs                                   |
| Back Panel Screw Material     | 304 SS   |
| Installation Mounting Torque  | 80 in-lbs Max                                  |
| Metal Inserts                 | Brass  |
| Hinge Material                | 304 SS   |
| Latch Material                | 304 SS   |
| Gasket Material               | Poured In Place (PIP)<br>Polyurethane Seamless |
| Country of Origin             | USA  |

## DIMENSIONS

|                   |       |
|-------------------|-------|
| Height (in)       | 32.9  |
| Width (in)        | 21.0  |
| Depth (in)        | 13.9  |
| Height (mm)       | 834.6 |
| Width (mm)        | 533.1 |
| Depth (mm)        | 352.8 |
| Usable Depth (in) | 12.2  |
| Usable Depth (mm) | 311.0 |

## STANDARDS

|                                   |                           |
|-----------------------------------|---------------------------|
| NEMA 10250; UL 50; UL 50e; UL508A | cULus Listed File #E64358 |
| CSA Std. C22.2                    | cULus Listed File #E64358 |
| Type                              | 1; 12                     |
| UL1741                            | UL Listed File #E333478   |
| Temperature Range °F              | -76°F to +274°F           |
| Temperature Range °C              | -60°C to +134°C           |
| IEC 62262 Impact Rating Listed    | IK10 per File #E362920    |
| Flammability Rating               | UL94-5VA                  |
| NFPA No. 101 Flame Spread         | Class A(1)                |
| Outdoor Exposure UL746c           | (f1) Rated                |
| CE                                | Certified                 |