



STAHLIN

A ROBROY ENCLOSURES™ BRAND

stahlin.com

**The most
specified
enclosures
in the world.**

Non-Metallic Enclosures

Fiberglass | Polycarbonate | PVC

STAHLIN® ENCLOSURES – THE PIONEER OF NON-METALLIC ENCLOSURE TECHNOLOGY

Throughout nearly 60 years, our innovation and proven quality have enabled us to lead the electrical products industry in designing, engineering and manufacturing world-class fiberglass, polycarbonate, and PVC electrical and instrumentation enclosures for diverse interior and exterior applications. Stahlin provides the marketplace's most extensive in-stock and customized line of non-metallic enclosures and accessories, balancing appealing aesthetics with stringent physical property performance standards including NEMA 4X, NEMA 6P, IEC IP66 and IEC IP68 integrity. As a proud U.S. manufacturer, we are the primary source producer of all our own enclosure components.

RIGHT PRODUCT

Stahlin brings you the most frequently specified non-metallic electrical enclosures in the world, featuring 15 full product lines encompassing thousands of part numbers and hundreds of configurations.

Our fiberglass, polycarbonate, and PVC enclosures balance appealing aesthetics with demanding performance standards including NEMA 4X, NEMA 6P, IP66 and IP68 integrity, providing ideal performance solutions for diverse interior and outdoor job applications.

Our enclosures are so reliable we back them with our Sun-Up-To-Sun-Down 10 Year Product Warranty – a promise of quality unequalled in the enclosure industry.

RIGHT PRICE

With centralized production in Michigan, we are the primary source producer of our key fiberglass and polycarbonate enclosure components. We have hands-on control of our integrated, in-house manufacturing processes, including molding, CNC and gasket functions, from first step to last touch. We mold our enclosures using the highest processing standards supported by equally stringent operational efficiency. Stahlin Non-Metallic Enclosures offer significant cost and value savings against stainless steel, yet provide comparable or superior physical property benefits. We are very price competitive with other non-metallic material options while frequently offering better proven performance.

RIGHT NOW

Stahlin Non-Metallic Enclosures in-stock lines are available when you need them, where you need them.

Whether you are a maintenance engineer, contractor, distributor, or end user, we understand your application requirements and are immediately able to help.

Our ModRight™ program can quickly meet your needs for customization ranging from simple hole drilling, windows and vents – to silk-screening, EMI/RFI shielding, unique size requirements, molded-in color and custom blend of molding materials, and final assembly.



SOLAR



WASTEWATER



AGRICULTURE,
FARMING &
IRRIGATION



CAR WASH



COMMUNICATIONS
& TELECOM



LIGHTING
CONTROL

MODRIGHT™ MODIFICATIONS

Our ModRight Program is designed to support you in very uncommon or complex applications. Stahlin Enclosures prides itself in its willingness and ability to meet the enclosure modification needs of our customers. The combination of technologically advanced equipment and a sound procedure for handling the most detailed modification allows Stahlin Enclosures to process modifications on time, and to the highest quality standards in the industry. Modifications can be mixed and matched in an endless number of combinations.

- Custom mold-in colors
- Silk screening
- EMI/RFI shielding
- Custom window sizes
- Custom cutouts/holes
- Custom size enclosures
- Customer covers
- Packaging
- Prototyping
- Custom materials
- Custom back panels
- Other special requests



STAHLIN BOOTCAMP

A unique, hands-on, nationally recognized, one and a half day educational experience designed to give participants an enjoyable but instructional opportunity to learn about:

- Stahlin product offerings
- The history of enclosure applications
- Enclosure manufacturing process
- Enclosure materials including comparative features and benefits
- Performance characteristics and properties of enclosure materials and relevance to applications
- Codes and regulations specific to enclosure applications

Stahlin BOOTCAMP is highly interactive and focuses on real-life applications, learning-by-doing, and direct one-on-one time with professionals who are experts in enclosures and materials.



UTILITIES



ELECTRICAL EQUIPMENT
MANUFACTURING



FOOD &
BEVERAGE



MINING



OIL & GAS



MARINE

SolarGuard®



A non-halogenated fiberglass system that beats the effects of outdoor exposure plus provides the chemical and flame resistance you've come to expect from Stahlin Fiberglass Enclosures! **SolarGuard**®, in extensive comparison testing, outperformed other available SMC formulations by as much as 60% in its ability to retain gloss and color after exposure to concentrated UV light.

SolarGuard's® patented double protection formula was developed in Stahlin's FormRight lab. Due to its chemical composition and other additives, **SolarGuard**® is able to reduce the effects of UV degradation such as surface roughening and fiber blooming.

SolarGuard® features new, proprietary double protection formulation technology that significantly enhances the molecular bond strength and crosslinking that occurs during the curing process in thermosetting polyester sheet molding compounds (SMC). Our **SolarGuard**® system fights polymer degradation by making it much more difficult for UV light to attack molecular bonds of both primary chains and crosslinks. A special UV Absorber is added to the **SolarGuard**® formulation which acts to absorb UV energy, then to release it without damaging the polymer chain. As the new standard SMC formulation for all of our fiberglass electrical products, **SolarGuard**® provides an unsurpassed level of UV resistance, fire retardancy, chemical resistance and safe, durable performance...all without adding cost to our world class electrical enclosures.



Industrial Control Enclosures



PolyStar® Series

The most durable, reliable NEMA 4X non-metallic polycarbonate enclosures available. Made in the U.S.A., PolyStar® polycarbonate enclosures can withstand rain, sleet, snow, splashing water, hose directed water—and provide superior impact and flame protection!

- Size ranges: 6" x 6" to 24" x 24"
- Polycarbonate latches and hinges do not penetrate enclosure
- Opaque and smoked clear cover options
- Flush-fit side mount swing panel and DIN Rail system
- Side mount solutions accommodates DIN Rail, Side Panels and Equipment
- Panel mounting solutions – revolutionary design, variable height, swings open from any side
- Multi-directional mounting feet
- UV stabilized polycarbonate
- Integrated lock hasp
- Rated Type 1, 3R, 4, 4X, 6P, 12
- Rated IEC IP66
- UL/cUL Listed



J & JW / RJ & RJW Series

This product line was developed as an industrial enclosure for harsh, aggressive environments. Originally developed as an electrical junction box for the oil refining and petrochem industries, the J Series has evolved over the years into a versatile industrial enclosure with varied applications for use from high-end electronics to extreme corrosive applications both indoors and out. Rugged design combined with tough, durable materials, for extreme reliability in tough environments are key attributes of this series.

- Size ranges: 6" x 4" to 30" x 24"
- Opaque, raised, flush-bonded window available
- All stainless steel hardware
- Integrally molded mounting flange
- Plenum space rated
- Rated Type 1, 3, 4X, 6P, 12
- Rated IEC IP66
- UL/cUL/CSA Listed
- SolarGuard® fiber reinforced polyester



Diamond Shield® Series

Developed for design flexibility and pleasing aesthetics. Applications include high-end electronics, harsh corrosive environments, and industrial applications both indoors and out. Patented panel management capabilities provide the end user with only the features they need for their application, leaving every cubic inch of valuable internal enclosure space for use.

- Size ranges: 6" x 6" to 20" x 16"
- Opaque, flush-bonded window, and clear cover options available
- Field interchangeable covers and hardware
- SolarGuard® fiber reinforced polyester
- No penetrable hardware
- Unobstructed walls for ease of conduit or component placement
- Panel mounting capability in the cover
- IP66 Compliant
- Rated Type 1, 3, 3S, 4X, 12, 13
- UL/cUL/CSA Listed



Classic Series

Developed for high-end electronics manufacturers who were looking for both toughness and durability along with modern styling, pleasing aesthetics, and smooth rounded edges. Especially well suited for high visibility locations in both industrial and commercial applications. Includes unique hidden hinge design and flush fitting cover.

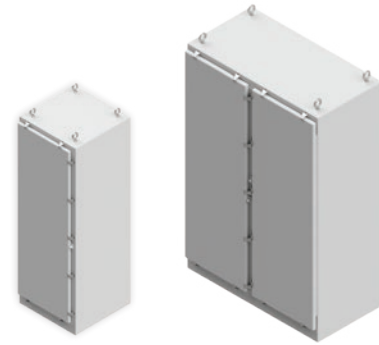
- Size ranges: 7" x 7" to 15" x 13"
- Opaque and flush-bonded window cover options available
- Can be hinged both long and short side
- Flush cover with hidden hinge design
- Optional mounting foot kit
- Rated Type 1, 3, 3R, 3S, 4X, 12
- UL/cUL/CSA Listed
- SolarGuard® fiber reinforced polyester



N Series – Wall Mount

Designed for control systems and machine tool control panels, indoor or outdoor use. The industrial look and ruggedness offers the most practical solution to many applications. These small to medium-sized wall mount enclosures are designed to maximize available space for electrical, hydraulic or mechanical control circuits.

- Size ranges: 16" x 10" to 60" x 36"
- Flat and flush-bonded window cover options available
- All Stainless Steel hardware
- Padlocking hasp
- Rated Type 1, 3, 3R, 4X, 12
- Rated IEC IP66
- UL/cUL/CSA Listed
- SolarGuard® fiber reinforced polyester



N Series – Freestanding

Designed for use in larger industrial control systems and machine tool control panels. Their industrial look and ruggedness offer the most practical solution to many applications and are well suited for both indoor and outdoor environments.

- Size ranges: 60" to 90"
- Water tight and rain tight; indoor and outdoor; corrosion resistant
- No sidewall obstructions
- Padlocking hasp
- Panel mounting studs
- Rated Type 1, 3, 3R, 4X, 12
- Rated IEC IP66
- UL/cUL/CSA Listed
- SolarGuard® fiber reinforced polyester



Operator Interface Enclosures



PushButton Series

Designed for general-purpose electrical and electronic applications and control stations. Easily adaptable for most common pushbutton and indicator lights, the series is useful for compact portable control systems or for use as an operator interface in both indoor and outdoor environments. The rugged and durable design, either in-line or multi-hole, allows use in many MRO and OEM applications.

- Size ranges in-line: 6" x 3" to 17" x 3"
- Size range multi-hole: 6" x 6" to 10" x 8"
- Available in 22mm or 30mm
- No sidewall obstructions
- Grounding strap included
- Rated Type 1, 3, 4X, 6P, 12
- UL/cUL/CSA Listed
- SolarGuard® fiber reinforced polyester
- Fiberglass In-Line available 1-6 openings
- Fiberglass Multi-Hole available 4, 6 and 9 openings
- Polycarbonate option available in 1 and 2 openings



Disconnect Series

The industrial look and ruggedness offers the most practical solution for many applications such as machine control, marine, wastewater, and chemical production. The disconnect handle is made from a corrosion resistant composite for extreme environmental conditions. These small to medium size wall mount enclosures are designed to maximize available space for electrical, hydraulic or mechanical control circuits. The design is easily adaptable to many popular disconnect and circuit breaker designs such as Allen Bradley, Siemens, Cutler Hammer, and Square D.

- Size ranges: 20" x 16" to 36" x 30"
- Rated Type 1, 3, 3R, 4X, 12
- UL/cUL/CSA Listed
- Environmentally sealed Type 4X Disconnect Handle
- SolarGuard® fiber reinforced polyester



Junction Style Enclosures



DuraBoxx® Series

These enclosures were designed for rugged durable performance in both commercial and industrial indoor and outdoor environments such as mining, oil, gas, wastewater treatment, and petrochem. With its sleek design—shallow depths and flush cover design, these enclosures are well suited for high-end electronic applications such as wireless communications and operator interfaces.

- Size ranges: 3" x 3" to 24" x 16"
- Flat cover with captive cover screws
- DIN Rail mounting capabilities
- No sidewall obstructions, flush cover
- Optional mounting foot kit
- Rated IEC IP66, IP67, IP68
- Rated Type 1, 3, 3S, 4X, 6, 6P, 12
- UL/cUL/CSA Listed



Starke Series

Proven Protection When "Small Is A Big Advantage!" Starke Series is a polycarbonate enclosure series in either opaque (ST) screw cover or clear (STCC) screw cover versions. The flush sides of the enclosure make it a sought-after OEM design product. Raised bosses accommodate back panel mounting and are successfully used for remote sensor mounting and small electronic controls in any environment.

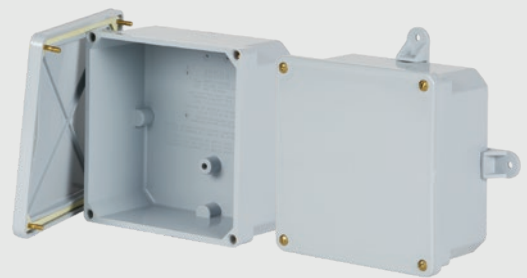
- Size ranges: 3" x 2" to 10" x 6"
- Multiple depths available in most sizes
- Resistant to harsh environments
- Flush sides for a perfect fit
- Multiple molded in bosses for a variety of mounting solutions
- Rated IEC IP66
- Rated Type 1,3R,4,4X,12
- UL/cUL Listed



CF & F Series

Designed for use in compact or portable control systems or for use as an operator interface in both indoor and outdoor environments. They can also be used as general junction or termination point enclosures in an electrical system. The rugged and durable design allows for use in many MRO and OEM applications. The slim design style allows easy use of pushbuttons and switches in machine control applications or where tight or dense space requirements are necessary.

- Size ranges: 3" x 3" to 17" x 3"
- No sidewall obstructions
- Plenum space compliant
- Rated IEC IP66, IP67, IP68
- Rated Type 1, 3R, 4X, 6P, 12
- UL/cUL/CSA Listed
- SolarGuard® fiber reinforced polyester



NewSentry® Series

The Thermoplastic PVC junction enclosures are designed for general purpose and industrial applications, including outdoor landscaping, agricultural, marinas, car washes, and residential. These enclosures are well suited for extremely wet applications and corrosive environments both indoor and outdoor. Their small footprint and extra deep features allows use in tight or dense spaces.

- Size ranges: 4" x 4" to 12" x 12"
- No sidewall obstructions
- Made from water resistant PVC and PVC gaskets
- Cost effective for general purpose applications
- Rated Type 1, 2, 3, 4, 4X, 12, 13
- UL/cUL/CSA Listed

Easily Customize Your Enclosures

Back Panels

We offer a wide range of mounting panel options for most product lines. Designs include standard back panels, dead front panels, swing panels, cover panels, and various adjustable height dead front panels.

→ Multiple options available: Carbon steel, aluminum, stainless steel and fiberglass



Accessories

We offer a wide variety of accessories to complement our enclosure offering. From vents to conduit fittings, our accessories are designed to maintain the original enclosure ratings once installed.

- Breather Vents – UL/CSA 4X
- Drain Vents – UL/CSA 4X
- Hole Plugs – Pluggit® – UL/CSA 6P
- Various Latching Alternatives
- Carrying Handles
- Print Pockets
- Vapor Capsules
- Conduit Fittings, Cord Grips and Cable Glands
- Pipe Straps
- Fiberglass Strut
- Trough



Custom Products

You may utilize our SMC manufacturing, compression molding, injection molding and other processes to design and develop products unique to the end user or application. Examples include custom cover designs with molded in features such as logos, bosses and ribs that define a profile or feature. This can also consist of pultruded shapes, thermoplastic injection molded components and vacuum formed component parts.

- Turnkey design and tool build service
- Custom molding, compression, injection



We have a tradition of quality,
craftmanship, service and pride.

RIGHT PRODUCT. RIGHT PRICE. RIGHT NOW.





STAHLIN

A **ROBROY** ENCLOSURES™ BRAND

500 Maple Street
Belding, MI 48809

o: 616.794.0700

e: CSR@robroyenclosures.com

stahlin.com

MADE IN THE USA