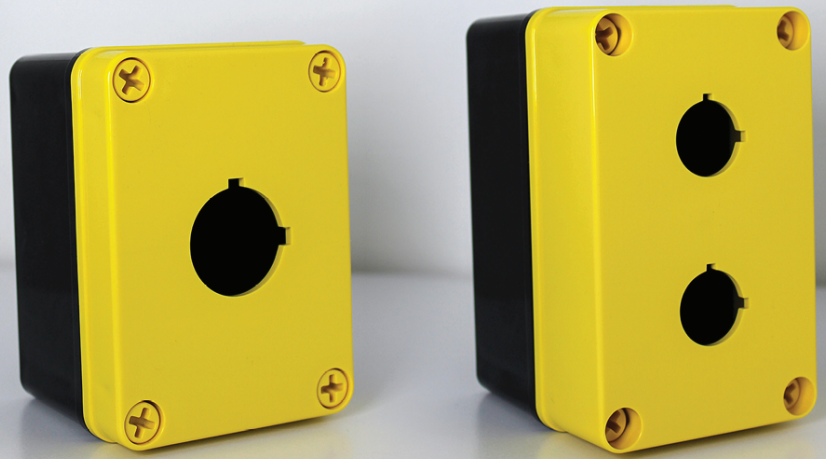


Now Available!

Safety Yellow PushButton Enclosures

High-visibility polycarbonate push button enclosures from Stahlin meet EN/IEC 60947-5-5, EN/IEC 60204-1, and EN ISO 13850 requirements for emergency stop applications.



IDEAL FOR INDUSTRIAL AND COMMERCIAL E-STOP APPLICATIONS

SUPERIOR INDOOR AND OUTDOOR PROTECTION AGAINST:



RAIN, SLEET & SNOW



FOREIGN OBJECTS (FALLING DIRT)



SUN/UV



FLAMES



SUBMERSION

APPLICATION:

- Suitable for general purpose use in industrial and commercial indoor and outdoor environments in electrical push button and indicator light applications as an operator interface, housing for emergency-stop (E-stop) devices, and in compact portable control systems.
- Molded in a high-visibility yellow for use as a housing for start/stop buttons or an emergency stop button.

BENEFITS:

- High visibility yellow background ensures compliance with ISO standards and increases user safety especially in areas with low levels of lighting.
- Captive polymer cover screws, lift-off cover and memory retaining seamless polyurethane gasket offers superior environmental protection and corrosion resistance.
- Molded-in colors increase durability and eliminate damage to color from chipping or scraping and prevent need for frequent replacement.

INNOVATIONS & FEATURES:

- High-visibility yellow background for actuators
- Molded in color will not chip or scrape away
- 4 captive polymer cover screws, lift off cover
- Memory retaining seamless polyurethane gasket
- Mounting wells located under the cover/outside the gasket area
- Shipped with removable clear mylar protective film affixed to yellow cover for added protection prior to installation
- Four configurations: 1 hole 22mm diameter, 1 hole 30mm diameter, 2 holes 22mm diameter, 2 holes 30mm diameter
- Polycarbonate material construction with molded-in yellow color cover and black color base
- Soft edge design with minimal protrusions or exposed pocket areas to reduce collection of dust and debris
- Custom hole configurations and modifications are available upon request through our value-add Modright program. Please consult factory

MATERIALS

- Cover and Base: Polycarbonate with UV inhibitors
- Cover Screws: Polycarbonate
- Gasket: Polyurethane (Poured, seamless)

CERTIFICATIONS & RATINGS:

- Operating Temperature Rating: -40°F to +248°F (-40°C to +120°C)
- NEMA Type 1, 3, 4X, 6P, 12
- EN/IEC 60947-5-5, EN/IEC 60204-1, and EN ISO 13850 Emergency Stop Requirements
- UL94-5VA Flame Rating
- Cover screw torque: 16 in.-lbs
- cULus Listed per file #E319779
- IEC 60529: UL Listed per file #E362920 IP66, IP67, IP68
- Outdoor UV Exposure (UL 746C) (f1) Rated
- UL File E362920, IP66, IP67, IP68
- UL's best rating, an "f1" per UL 746C (resin has passed tests for UV exposure and water immersion)

 **STAHLIN**
A ROBROY ENCLOSURES BRAND

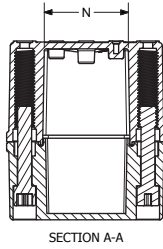
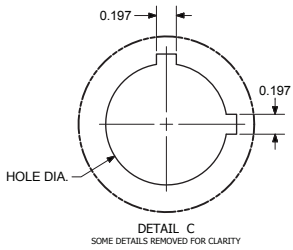
500 Maple Street, Belding, MI 48809
E: CSR@robroyenclosures.com P: 616.794.0700

Email quotes@robroyenclosures.com to order • stahlin.com

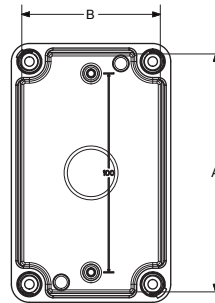
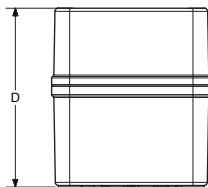
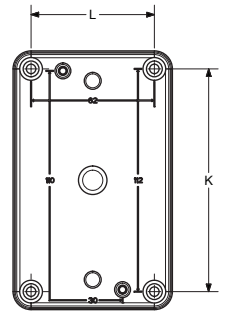
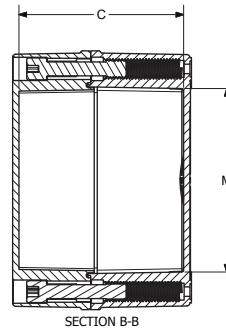
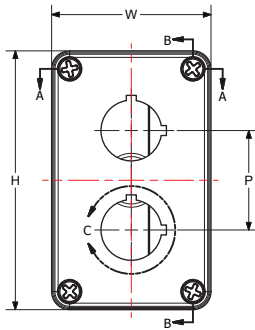
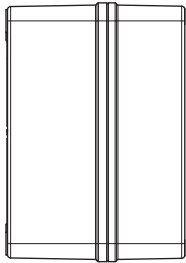
CATALOG NUMBERS AND DIMENSIONS:

| CATALOG NUMBER | HOLE CONFIG. | OVERALL H X W X D | INSIDE A X B X C | K | L | M | N | P | HOLE DIA. | SHIP WEIGHT |
|----------------|--------------|---------------------------------------|---------------------------------------|---------------|--------------|--------------|--------------|--------------|--------------|-------------|
| YW-CFPC1PB | 1 | 4.34 x 3.16 x 2.79 (110 x 80 x 71) | 3.92 x 2.74 x 2.51 (100 x 70 x 64) | 3.62 (92) | 2.44 (62) | 2.85 (72) | 1.66 (42) | N/A | 1.20 (31) | 2 lbs. |
| YW-CFPC2PB | 2 | 5.12 x 3.16 x 3.54 (130 x 80 x 90) | 4.71 x 2.74 x 3.26 (120 x 70 x 83) | 4.41 (112) | 2.44 (62) | 3.63 (92) | 1.66 (42) | 1.97 (50) | 1.20 (31) | 2 lbs. |
| YW-CFPC1PB22 | 1 | 4.34 x 3.16 x 2.79 (110 x 80 x 71) | 3.92 x 2.74 x 2.51 (100 x 70 x 64) | 3.62 (92) | 2.44 (62) | 2.85 (72) | 1.66 (42) | N/A | 0.89 (23) | 2 lbs. |
| YW-CFPC2PB22 | 2 | 5.12 x 3.16 x 3.54 (130 x 80 x 90) | 4.71 x 2.74 x 3.26 (120 x 70 x 83) | 4.41 (112) | 2.44 (62) | 3.63 (92) | 1.66 (42) | 1.97 (50) | 0.89 (23) | 2 lbs. |

All measures are in inches, items in parentheses are in millimeters.



Safety Yellow PushButton



BOX DETAIL
FRONT VIEW

- NOTES:
- CATALOG DRAWING IS FOR REFERENCE ONLY
 - SEE ACTUAL PART DRAWING FOR SPECIFIC DESIGN
 - COVER OPTIONS:
 - BLANK - NO HOLES
 - 1PB - (1) 30 mm DIA. HOLE
 - 2PB - (2) 30 mm DIA. HOLES
 - 1PB22 - (1) 22 mm DIA. HOLE
 - 2PB22 - (2) 22 mm DIA. HOLES