

# CLASSIC SERIES

**STAHLIN**  
A ROBROY Brand

## TOUGH, DURABLE, AND AESTHETICALLY PLEASING

Enclosures in the Classic Series by Stahlin enhance the appearance of any installation while providing maximum service life and a wide range of cover securement methods to fit the end user's needs.



## MARKETS AND INDUSTRIES

- + Ideal for Non-Hazardous Industrial and Commercial OEM market segments
- + Industries such as O&G, Electrical Control, Security, Manufacturing, Communications, Wireless & Remote Monitoring

## APPLICATIONS

- + Stahlin Classic Series enclosures are designed for general electrical and electronic applications as well as applications requiring broader environmental concerns.
- + They are especially suited for high visibility locations found in both industrial and commercial applications. Chemical resistance and watertight capabilities make them ideal across a broad spectrum of environmental installations.

## INNOVATIVE FEATURES

- + Available in two cover options (opaque cover and flush bonded window), each with multiple cover securement methods
- + Stands up to an exceptionally broad range of chemical exposures
- + High impact resistance
- + Double insulated material to eliminate incidental electrical contact
- + Unique hidden hinge design
- + UV resistant
- + Hinge can be made available on the enclosure's short side - consult factory for more details
- + Super abrasion resistant acrylic window
- + High temperature, flame retardant, non corrosive environmental designs

## INDUSTRY STANDARDS

- + NEMA 10250, UL 50, UL 50e, UL508A
- + cULus Listed File #E64358 / CSA Std. C22.2
- + Type 1, 3, 3R, 3S, 4, 4X, 12, as designated
- + UL 1741 Listed File #333478, as designated
- + Flammability Rating: UL94-5VA
- + NFPA No. 101 Flame Spread: Class A(1)
- + Outdoor Exposure UL 746C: (f1) Rated

## PRODUCT CONFIGURATIONS

### OPAQUE COVER



HINGED,  
PADLOCK  
LATCH



HINGED,  
2 COVER  
SCREWS



4 COVER SCREWS,  
LIFT-OFF  
COVER



HINGED,  
TWIST  
LATCH



HINGED,  
THROUGH-THE-  
DOOR LATCH

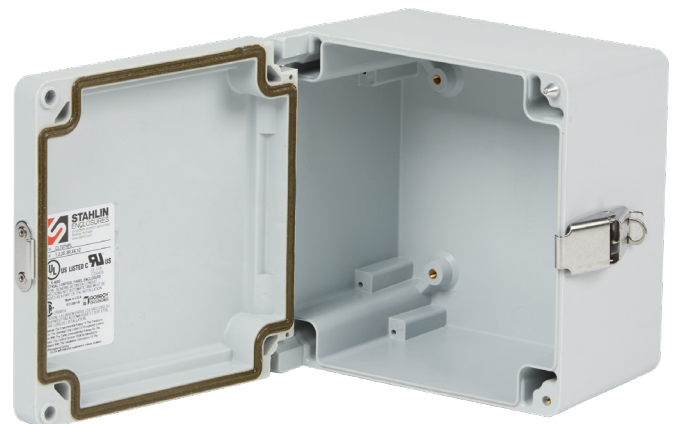
### FLUSH BONDED WINDOW



HINGED,  
2 LOCKABLE  
PULL LATCHES



HINGED,  
2 LOCKABLE  
LINK LATCHES



# OPAQUE COVER CONFIGURATIONS



## HINGED, PADLOCK LATCH

### Materials

- + SolarGuard® hot compression molded fiberglass reinforced polyester

### Gasket

- + Poured polyurethane seamless gasket provides watertight, dust-tight environmental seal

### Stainless Steel Hardware

- + 300 Series stainless used on all external hardware

### Mounting Bosses

- + Panel mounting capability for fixed rear panel

### Metal Inserts

- + All bosses utilize threaded brass inserts accepting 10-32 screws

### Soft Edge Design

- + Rounded edges, hidden hinge, and minimal protrusions or exposed pocket areas for assembly of dust and debris

### Color

- + Standard glacier grey (PMS 428C). *Additional colors available as part of ModRight program-consult factory.*



## HINGED, 2 COVER SCREWS

### Materials

- + SolarGuard® hot compression molded fiberglass reinforced polyester

### Gasket

- + Poured polyurethane seamless gasket provides watertight, dust-tight environmental seal

### Recessed Screws

- + No protruding surfaces

### Stainless Steel Hardware

- + 300 Series stainless used on all external hardware

### Mounting Bosses

- + Panel mounting capability for fixed rear panel

### Metal Inserts

- + All bosses utilize threaded brass inserts accepting 10-32 screws (Cover — 10-24 screws)

### Soft Edge Design

- + Rounded edges, hidden hinge, and minimal protrusions or exposed pocket areas for assembly of dust and debris

### Color

- + Standard glacier grey (PMS 428C). *Additional colors available as part of ModRight program-consult factory.*



## 4 COVER SCREWS, LIFT-OFF COVER

### Materials

- + SolarGuard® hot compression molded fiberglass reinforced polyester

### Gasket

- + Poured polyurethane seamless gasket provides watertight, dust-tight environmental seal

### Recessed Screws

- + No protruding surfaces

### Stainless Steel Hardware

- + 300 Series stainless used on all external hardware

### Mounting Bosses

- + Panel mounting capability for fixed rear panel

### Metal Inserts

- + All bosses utilize threaded brass inserts accepting 10-32 screws (Cover — 10-24 screws)

### Soft Edge Design

- + Rounded edges, hidden hinge, and minimal protrusions or exposed pocket areas for assembly of dust and debris

### Color

- + Standard glacier grey (PMS 428C). *Additional colors available as part of ModRight program-consult factory.*



## HINGED, TWIST LATCH

### Materials

- + SolarGuard® hot compression molded fiberglass reinforced polyester

### Gasket

- + Poured polyurethane seamless gasket provides watertight, dust-tight environmental seal

### Stainless Steel Hardware

- + 300 Series stainless used on all external hardware

### Mounting Bosses

- + Panel mounting capability for fixed rear panel

### Metal Inserts

- + All bosses utilize threaded brass inserts accepting 10-32 screws

### Soft Edge Design

- + Rounded edges, hidden hinge, and minimal protrusions or exposed pocket areas for assembly of dust and debris

### Color

- + Standard glacier grey (PMS 428C). *Additional colors available as part of ModRight program-consult factory.*



## HINGED, THROUGH-THE-DOOR LATCH

### Materials

- + Body - SolarGuard® hot compression molded fiberglass reinforced polyester
- + Latch - glass-filled polyimide

### Gasket

- + Poured polyurethane seamless gasket provides watertight, dust-tight environmental seal

### Stainless Steel Hardware

- + 300 Series stainless used on all external hardware

### Mounting Bosses

- + Panel mounting capability for fixed rear panel

### Metal Inserts

- + All bosses utilize threaded brass inserts accepting 10-32 screws

### Soft Edge Design

- + Rounded edges, hidden hinge, and minimal protrusions or exposed pocket areas for assembly of dust and debris

### Color

- + Standard glacier grey (PMS 428C). *Additional colors available as part of ModRight program-consult factory.*

# FLUSH BONDED WINDOW CONFIGURATIONS



## HINGED, PADLOCK LATCH

### Materials

- + SolarGuard® hot compression molded fiberglass reinforced polyester

### Gasket

- + Poured polyurethane seamless gasket provides watertight, dust-tight environmental seal

### Stainless Steel Hardware

- + 300 Series stainless used on all external hardware

### Mounting Bosses

- + Panel mounting capability for fixed rear panel

### Metal Inserts

- + All bosses utilize threaded brass inserts accepting 10-32 screws

### Soft Edge Design

- + Rounded edges, hidden hinge, and minimal protrusions or exposed pocket areas for assembly of dust and debris

### Bonded Window

- + Precision routed flush bonded super abrasion resistant acrylic material for maximum visibility

### Color

- + Standard glacier grey (PMS 428C). *Additional colors available as part of ModRight program-consult factory.*



## HINGED, 2 COVER SCREWS

### Materials

- + SolarGuard® hot compression molded fiberglass reinforced polyester

### Gasket

- + Poured polyurethane seamless gasket provides watertight, dust-tight environmental seal

### Recessed Screws

- + No protruding surfaces

### Stainless Steel Hardware

- + 300 Series stainless used on all external hardware

### Mounting Bosses

- + Panel mounting capability for fixed rear panel

### Metal Inserts

- + All bosses utilize threaded brass inserts accepting 10-32 screws (Cover — 10-24 screws)

### Soft Edge Design

- + Rounded edges, hidden hinge, and minimal protrusions or exposed pocket areas for assembly of dust and debris

### Bonded Window

- + Precision routed flush bonded super abrasion resistant acrylic material for maximum visibility

### Color

- + Standard glacier grey (PMS 428C). *Additional colors available as part of ModRight program-consult factory.*

# CATALOG NUMBERS AND DIMENSIONS

Opaque Cover Configurations				
Catalog #	Available Configurations	Overall H x W x D	Inside H x W x D	Back Panel #
CL707*	HPL, HW, W, HLL	7.22 x 7.22 x 5.09	6.66 x 6.66 x 4.84	BP66*
CL907*	HPL, HW, W, HLL	9.22 x 7.22 x 5.09	8.59 x 6.59 x 4.84	BP86*
CL1109*	HPL, HW, W, HLL	11.22 x 9.22 x 6.09	10.59 x 8.59 x 5.84	BP108*
CL1311*	HPL, HW, W, HLL, HL	13.22 x 11.22 x 6.59	12.61 x 10.61 x 6.34	BP1210*
CL1513*	HPL, HW, W, HLL, HL	15.22 x 13.22 x 7.09	14.60 x 12.60 x 6.84	BP1412*

\*add suffix to specify configuration/material  
Panel sold separately.

Flush Bonded Window Cover Configurations				
Catalog #	Available Configurations	Overall H x W x D	Inside H x W x D	Back Panel #
CLW707*	HPL, HW	7.22 x 7.22 x 5.09	6.66 x 6.66 x 4.84	BP66*
CLW907*	HPL, HW	9.22 x 7.22 x 5.09	8.59 x 6.59 x 4.84	BP86*
CLW1109*	HPL, HW	11.22 x 9.22 x 6.09	10.59 x 8.59 x 5.84	BP108*
CLW1311*	HPL, HW	13.22 x 11.22 x 6.59	12.61 x 10.61 x 6.34	BP1210*
CLW1513*	HPL, HW	15.22 x 13.22 x 7.09	14.60 x 12.60 x 6.84	BP1412*

\*add suffix to specify configuration/material  
Panel sold separately.

Catalog # Suffix	Description	Back Panel # Suffix	Description
HPL	hinged w/ padlock latch	AL	aluminum
HW	hinged w/ cover screws	CS	carbon steel
W	lift-off cover w/ cover screws	FG	fiberglass
HLL	hinged w/ twist latch	SS	stainless steel
HL	hinged w/ through-the-door latch		

Note: Hinge can be made available on the enclosure's short side - consult factory for more details.  
Mounting feet sold separately. See Catalog for details.

