



HWT

# Bonded Window

Type 4X



**CONFIGURATION**  
Stainless steel hinged, latched down cover



## HWT Construction

<b>Material</b>	SolarGuard® – Hot compression molded fiberglass reinforced polyester, hand layup FRP
<b>Gasket</b>	Poured polyurethane seamless gasket provides watertight, dust-tight environmental seal
<b>Stainless Steel Hardware</b>	300 Series stainless used on all hardware
<b>Mounting Bosses</b>	Panel mounting capability for fixed rear panel
<b>Metal Inserts</b>	All bosses utilize threaded brass inserts accepting 3/8"-16 screws
<b>Soft Edge Design</b>	Rounded edges, minimal protrusions or exposed pocket areas for assembly of dust and debris
<b>Bonded Window</b>	Precision routed flush bonded Super Abrasion Resistant acrylic material for maximum visibility
<b>Color</b>	Available standard glacier grey (PMS 428C)

## HWT Modifications

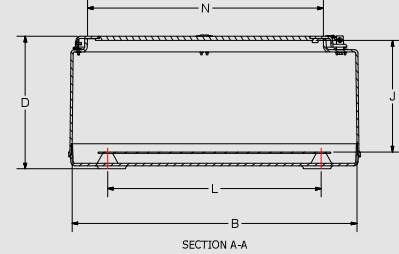
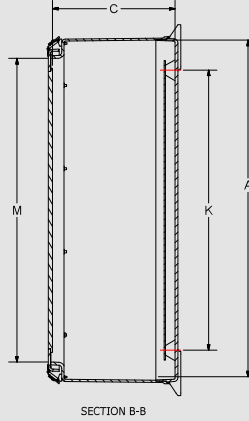
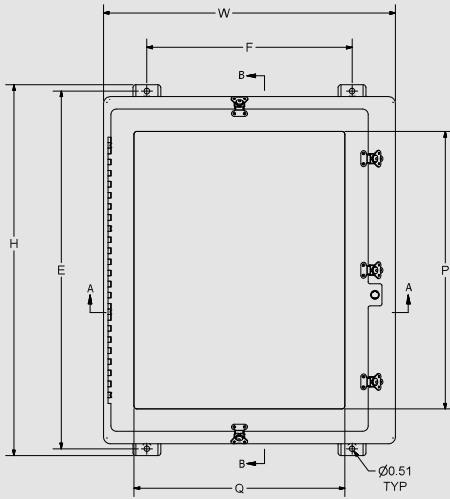
<b>Custom Colors</b>	pg. 21-22
<b>Silk Screening</b>	pg. 21-22
<b>EMI/RFI Shielding</b>	pg. 21-22
<b>Custom Window</b>	pg. 21-22
<b>Custom Cutouts/Holes</b>	pg. 21-22

## HWT Industry Standards

<b>NEMA 250, UL Listed UL50, UL50e, UL508A</b>	File E64358 Type 1, 3, 3R, 4X, 12
<b>CSA Std C22.2</b>	File LR069014 Type 1, 3, 3R, 4X, 12
<b>IEC 60529</b>	File E362920 IP66
<b>UL 1741</b>	File E333478
<b>Temperature Range</b>	(-76° F to +274° F) (-60° C to +134° C)
<b>Temperature Range Window</b>	(-26° F to +170° F) (-32° C to +76° C)
<b>Flammability Rating</b>	UL94-5V
<b>Impact Rating</b>	IK 10
<b>Window Flammability</b>	UL94V-HB
<b>Self Extinguishing</b>	Non-halogenated, non-flame propagating
<b>Chemical Resistance</b>	Full chemical resistance charts listed in appendix
<b>Outdoor Exposure UL746C</b>	(f1) Rated

## HWT Accessories

<b>PANELS</b>	<b>Aluminum</b>	BP_AL	pg. 178
	<b>Fiberglass</b>	BP_FG	pg. 178
	<b>Stainless Steel</b>	BP_SS	pg. 178
	<b>Carbon Steel</b>	BP_CS	pg. 178
	<b>Dead Front Panels</b>		pg. 180-181
<b>ACCESSORIES</b>	<b>Drain &amp; Breather Vents</b>		pg. 185
	<b>Hole Plugs</b>		pg. 187
	<b>Assorted Hubs and Cord Grips</b>		pg. 188-189
	<b>All Other Accessories</b>		pg. 184-194



- NOTES:  
 1. CATALOG DRAWING IS FOR REFERENCE ONLY.  
 2. SEE ACTUAL PART DRAWING FOR SPECIFIC DESIGN.  
 3. DIMENSION "J" IS WITH 0.105" THICK BACK PANEL INSTALLED.  
 4. BACK PANEL SOLD SEPARATELY.

### SCREW SIZES & TORQUE VALUES

PRODUCT SIZES	BACK PANEL SCREW SIZE	BACK PANEL RECOMMENDED TORQUE	COVER SCREW SIZE	RECOMMENDED MOUNTING FLANGE TORQUE
N1610 up to N4836	#3/8-16 x 1/2 Hex Bolt	28 - 32 in-lbs	N/A	80 in-lbs max
All made to order	#3/8-16 Stud	28 - 32 in-lbs	N/A	80 in-lbs max

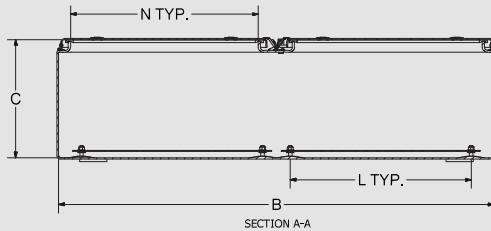
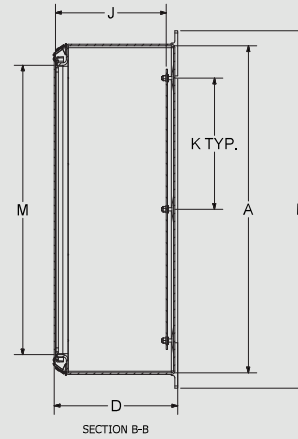
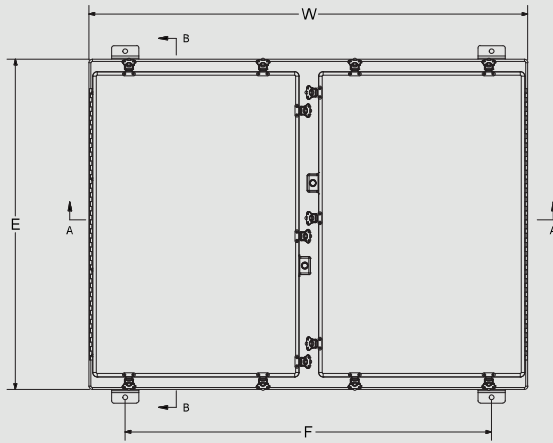
## N Series – Bonded Window

CATALOG NUMBER	OVERALL H X W X D	INSIDE A X B X C	WINDOW AREA (MAXIMUM) P X Q	MOUNTING E X F	J	K	L	ENCLOSURE OPENING M X N	NO. OF LATCHES	SHIP WEIGHT	PANEL NUMBER
NW201610HWT	22.75 x 16.87 x 11.77 (578 x 429 x 299)	19.70 x 16.04 x 11.24 (500 x 407 x 286)	14 x 10 (356 x 254)	21.50 x 10.12 (546 x 257)	10.26 (261)	15.25 (387)	11.25 (286)	16.75 x 12.19 (425 x 310)	2	24 lbs.	BP2016*
NW241210HWT	26.95 x 13.72 x 11.99 (685 x 348 x 304)	24.00 x 12.87 x 11.33 (610 x 327 x 288)	18 x 6 (457 x 152)	25.75 x 6.25 (654 x 159)	10.33 (262)	19.25 (489)	7.25 (184)	21.00 x 8.37 (533 x 213)	2	26 lbs.	BP2412*
NW24208HWT	27.00 x 21.24 x 9.90 (686 x 539 x 252)	24.05 x 20.39 x 9.25 (611 x 518 x 235)	19 x 14 (483 x 356)	25.75 x 14.00 (654 x 356)	8.25 (209)	19.25 (489)	15.25 (387)	21.25 x 16.00 (540 x 406)	4	34 lbs.	BP2420*
NW242410HWT	27.00 x 25.24 x 11.90 (686 x 641 x 302)	24.05 x 24.39 x 11.25 (611 x 619 x 286)	19 x 18 (483 x 457)	25.75 x 17.87 (654 x 454)	10.25 (260)	19.25 (489)	19.25 (489)	21.25 x 20.00 (540 x 508)	4	45 lbs.	BP2424*
NW30208HWT	32.86 x 20.99 x 9.89 (835 x 533 x 251)	29.90 x 20.14 x 9.23 (760 x 511 x 234)	24 x 14 (610 x 356)	31.75 x 14.25 (806 x 362)	8.23 (209)	25.25 (641)	15.25 (387)	27.00 x 16.50 (686 x 419)	5	39 lbs.	BP3020*
NW302410HWT	33.41 x 26.32 x 11.95 (849 x 668 x 304)	30.46 x 25.47 x 11.27 (774 x 647 x 286)	25 x 19 (635 x 483)	32.25 x 18.50 (819 x 470)	10.27 (261)	25.25 (641)	19.25 (489)	27.38 x 21.25 (695 x 540)	5	54 lbs.	BP3024*
NW363012HWT	39.31 x 32.50 x 14.05 (999 x 826 x 357)	36.31 x 31.69 x 13.36 (922 x 805 x 339)	31 x 25 (787 x 635)	38.13 x 23.88 (968 x 606)	12.36 (314)	31.25 (794)	25.25 (641)	33.25 x 27.25 (845 x 692)	5	86 lbs.	BP3630*
NW483612HWT	51.29 x 36.62 x 13.93 (1303 x 930 x 354)	48.33 x 36.22 x 13.25 (1228 x 920 x 336)	43 x 30 (1092 x 762)	50.12 x 28.5 (1273 x 724)	1225 (311)	21.63 (549)	31.25 (794)	45.25 x 32.00 (1149 x 813)	10	99.8 lbs.	BP4836*

All measures are in inches, items in parentheses are in millimeters.



\*Panel sold separately



- NOTES:
1. CATALOG DRAWING IS FOR REFERENCE ONLY
  2. SEE ACTUAL PART DRAWING FOR SPECIFIC DESIGN
  3. NOTE "J" DIMENSION IS WITH 0.105" THICK BACK PANEL INSTALLED
  4. BACK PANEL IS SOLD SEPARATELY

### SCREW SIZES & TORQUE VALUES

PRODUCT SIZES	BACK PANEL SCREW SIZE	BACK PANEL RECOMMENDED TORQUE	COVER SCREW SIZE	RECOMMENDED MOUNTING FLANGE TORQUE
N1610 up to N4836	#3/8-16 x 1/2 Hex Bolt	28 - 32 in-lbs	N/A	80 in-lbs max
All made to order	#3/8-16 Stud	28 - 32 in-lbs	N/A	80 in-lbs max

## N Series – Double Door

CATALOG NUMBER	OVERALL H X W X D	INSIDE A X B X C	MOUNTING E X F	ENCLOSURE OPENING			NO. OF LATCHES	SHIP WEIGHT	PANEL NUMBER
				J	K	L			
N364812DDRT*	39.50 x 48.50 x 13.62	36.12 x 48.12 x 13.00	38.25 x 40.5	11.94	14.50	20.00	6	140 lbs.	BP3648 (2)**
N364812DDHWT*	(1003 x 1232 x 346)	(917 x 1222 x 330)	(972 x 1029)	(303)	(368)	(508)			
N54428DDRT*	57.50 x 42.50 x 9.62	54.12 x 42.12 x 9.00	56.25 x 34.50	7.94	23.50	17.00	8	162 lbs.	BP5442 (2)**
N54428DDHWT*	(1460 x 1080 x 244)	(1374 x 1069 x 228)	(1429 x 876)	(201)	(596)	(431)			

All measures are in inches, items in parentheses are in millimeters.  
 Note: Mounting hole dimension is .50 inches.



\*Made to order.



\*\*Panel sold separately