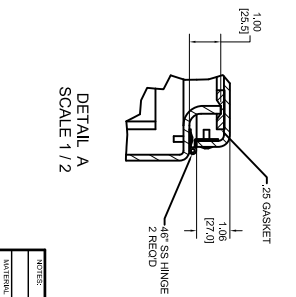
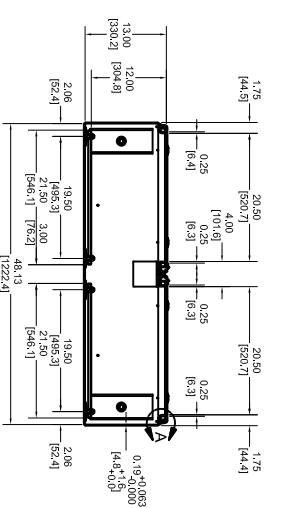
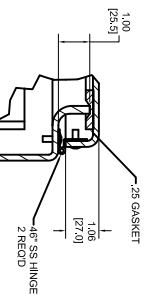
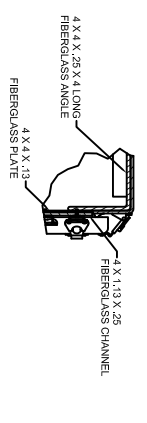
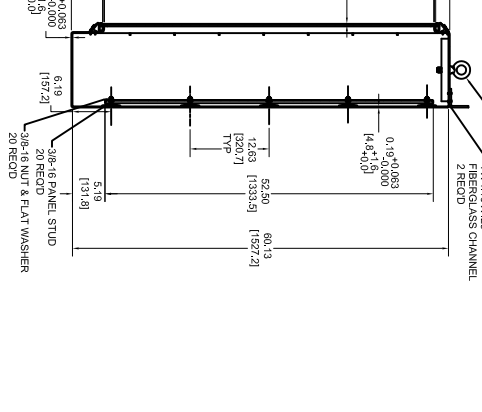
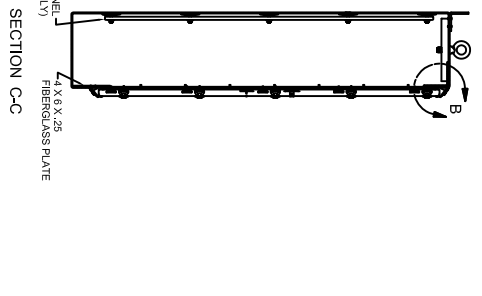
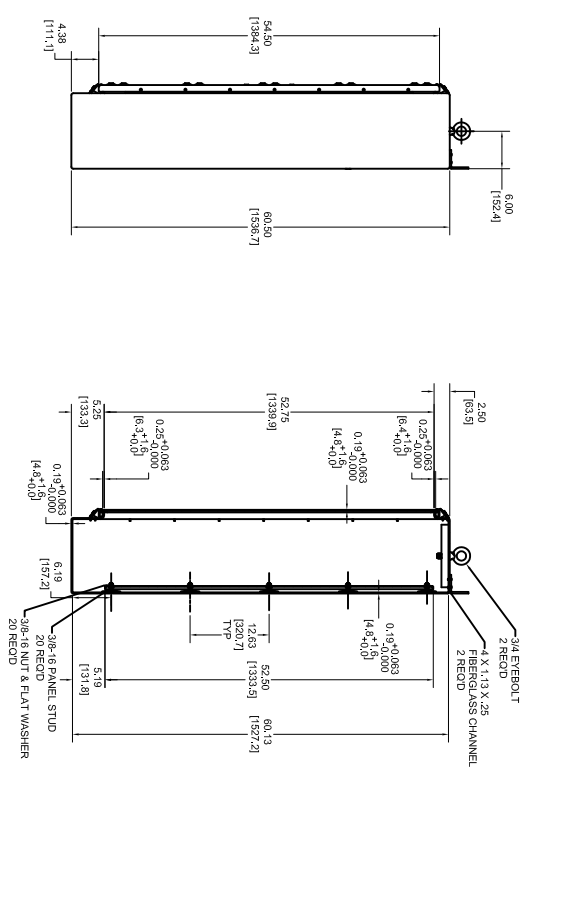
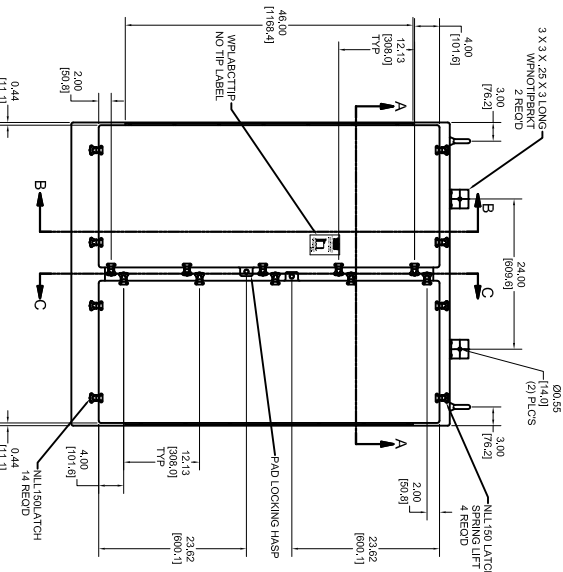


PARTS LIST		PARTS LIST			
ITEM	QTY	DESCRIPTION	ITEM	QTY	DESCRIPTION
1	10 EA	RAMTIN2X2X3	17	36 EA	RAMRIV46
2	4 EA	RAMTIN38X38	18	16 EA	RAMRIV6
3	26 FT	RAMSIS18FDRON	19	16 EA	RAMRIV6
4	2 EA	RAMSFRNGS	20	4 EA	RAMRIV20X22RCS
5	4 EA	RAMSSNGS	21	2 EA	RAMRIV20X22RCS
6	4 EA	RAMSSNGS	22	2 EA	RAMRIV20X22RCS
7	16 EA	RAMKEEPL150WT	23	20 EA	RAMWAS28
8	1 EA	RAMAB508	24	20 EA	RAMWAS28
9	1 EA	WPLABCTTIP	25	16 EA	RAMWAS28
10	14 EA	RAMATNLL150L SFRG	26	20 EA	RMSJUD20X43PFL
11	4 EA	RAMATNLL150H SFRG	27	2 EA	RMSCEB28
12	1 EA	WPLABCTTIP	28	2 EA	RAMWAS24
13	2 EA	WPLABCTTIP	29	166 FT	RAMTIN24X10
14	20 EA	RAMRIV28X16	30	6 FT	RMSJGL14X24X118C
15	36 EA	RAMRIV44	31	3300 SQ FT	RMSJGL14X24X44
16	36 EA	RAMRIV44	32		FIBERGLASS ANGLE



NOTES		MATERIAL		DATE		DATE		DATE	
1. UL TYPE AW, IEC BNS, WALL, THK 3/16		EXT	INT	REV	BY	CHK	DATE	REV	BY
2. EXTENSION & INTERIOR GLASSER GRAY		A		1					
3. ADDITIONAL MATERIAL									

STAHLIN ENCLOSURES
 4889
 BLDG. MICHIGAN
 4889

SCALE	PART NAME	ENCLOSURE	PART NO.
1/10			MS048175SDHW1