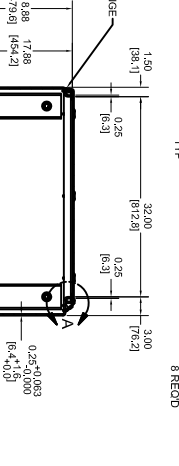
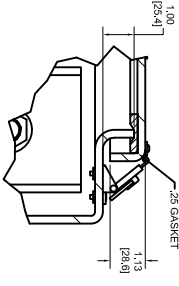
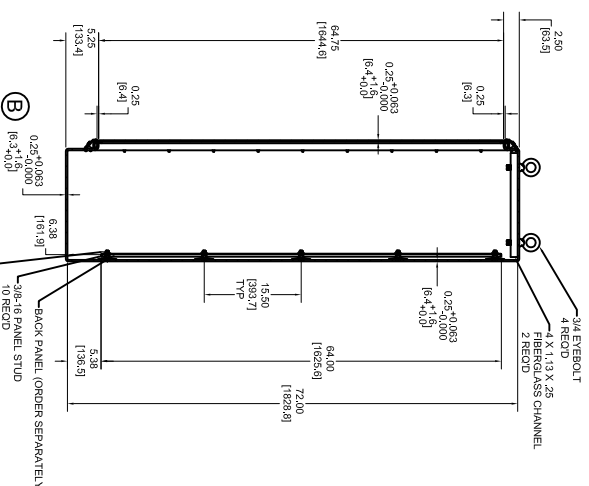
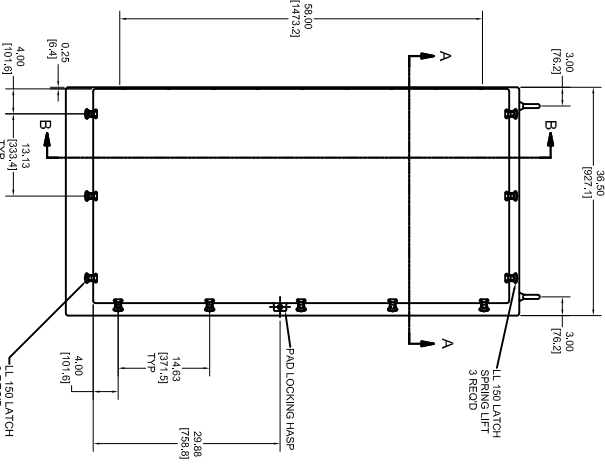
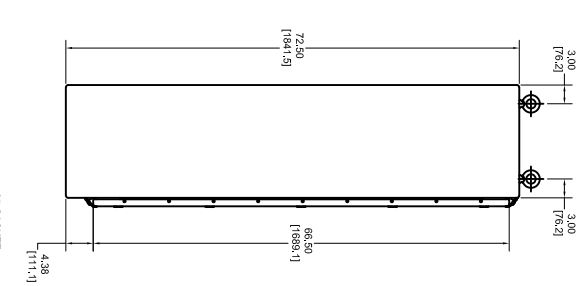


PARTS LIST				PARTS LIST			
ITEM	QTY	PART NUMBER	DESCRIPTION	ITEM	QTY	PART NUMBER	DESCRIPTION
1	3 EA	RINUT46	PACKAGING	14	22 EA	RINUT46	LATCH RIVET
2	3 FT	RMPGL14X178C	FIBERGLASS CHANNEL	15	20 EA	RINUT46	NUT RIVET
3	18 FT	RNGA514PDRON	GASKET	16	1 EA	RMSCJ14-20X12HCS	SCREW FOR HASP PIN
4	1 EA	RMHASP28	HASP PIN	17	4 EA	RMSCE28	EYE-BOLT WASHER
5	3 EA	RMHLSB	3/8" STEEL LINGE	18	10 EA	RMMW38	EYE-BOLT WASHER
6	1 EA	RM190WT	190 WT	19	10 EA	RMMW38	EYE-BOLT WASHER
7	8 EA	RLMLN1L150	LONGSIDE / BOTTOM LATCH	20	10 EA	RMMW38	EYE-BOLT WASHER
8	3 EA	RLMLN1L150L SPEC	TOP SPRING LOADED LATCH	21	10 EA	RMVVA598X10L	BACK PANEL LOCK WASHER
9	1 EA	WPNZ28CQR	FIBERGLASS BASE	22	22 EA	RMMW38X18X092	LATCH WASHER
10	4 EA	WNZ28CQR	FIBERGLASS COVER	23	1 EA	RLMLAB08	LL LABEL
11	4 EA	RINUT174-10	3/4-10 NUT	24	1 EA	RLMLN5TG	ROUNDING INSTRUCTIONS
12	10 EA	RINUT178-16	3/8-16 NUT	25	10 EA	RNSTUD20X28PPL	ALUMINUM STUD
13	22 EA	RINUT46	KEEPERS RIVET				



SECTION A-A

SECTION B-B

DETAIL A
SCALE 1/2

SECTION A-A

NOTES: LL TYPE AW, EDC BINS, WALL THK. 1/4
EXTENSION & INTERIOR GLAZIER GRAY

REV	DATE	BY	CHKD	DATE	DESCRIPTION
A					ADDED RING
B					ADDED TOLERANCE TO WALL THICKNESS

SCALE 1/10

STAHLIN ENCLOSURES		TOL BRACKETS (UNLESS SPECIFIED)	
		XXX: 2 0.13 (3.18)	
		XXX: 1 0.03 (0.76)	
		4889	
		BELDING MICHIGAN	
		CUSTOMER	
		PART NAME	
		ENCLOSURE	
		PART NO.	
		M22816FSHW	

1. SEE DRAWING FOR DIMENSIONS AND TOLERANCES.
2. DIMENSIONS ARE IN INCHES (MILLIMETERS).
3. DIMENSIONS ARE TO UNLESS OTHERWISE SPECIFIED.
4. DIMENSIONS ARE TO UNLESS OTHERWISE SPECIFIED.
5. DIMENSIONS ARE TO UNLESS OTHERWISE SPECIFIED.