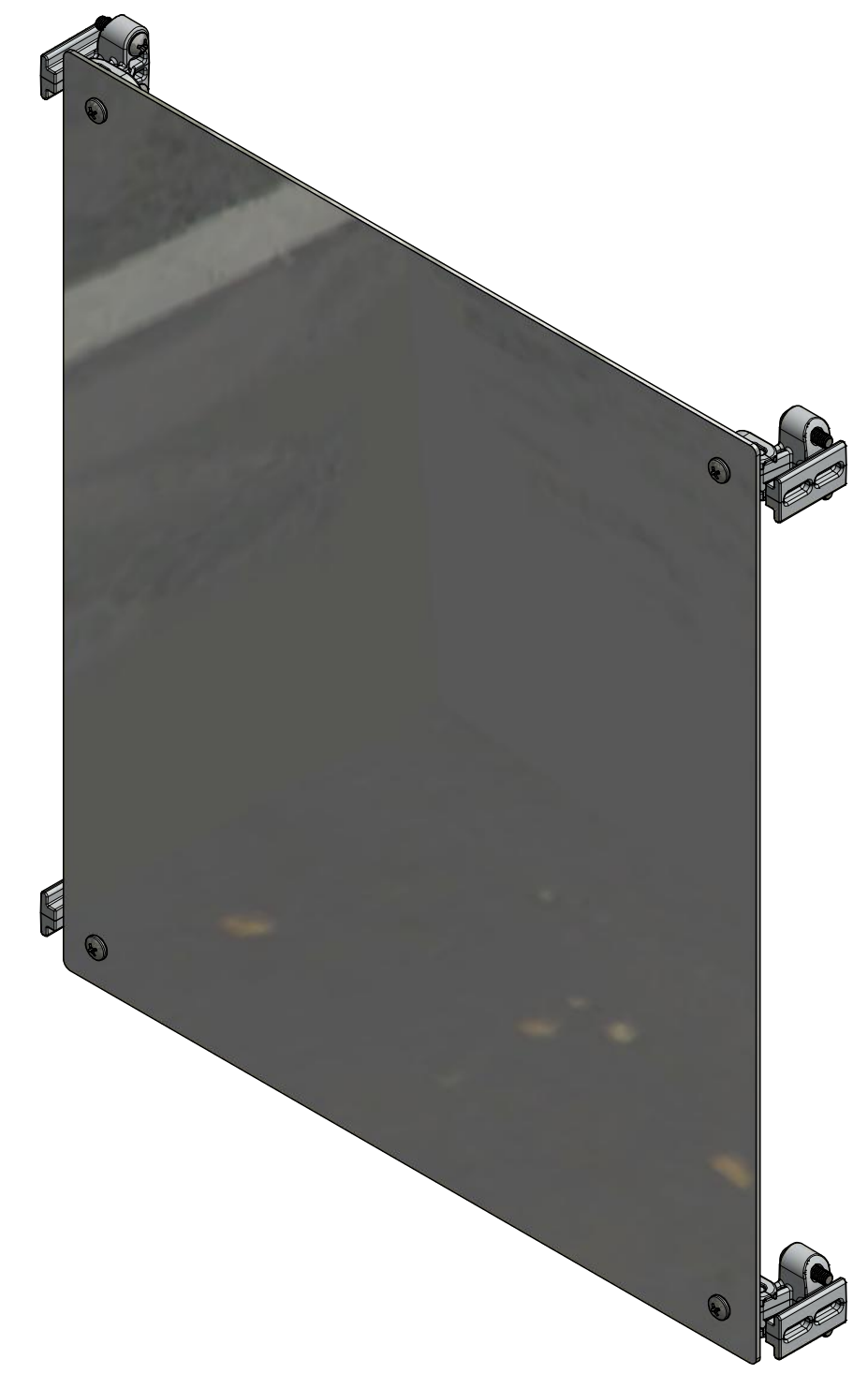


0.08
(12 GAUGE)



FOR REFERENCE ONLY
SWING PANEL MOUNTS SHOWN AS INSTALLED

NOTES:


1. PANEL SHALL BE FREE FROM BURRS & SHARP EDGES
2. PANEL SHALL BE FLAT
3. MISALIGNED EDGES EXCEEDING 0.005" (STEPS) SHALL NOT BE PERMITTED
4. ALL EDGES SHALL BE SQUARE AND PARALLEL
5. PANEL SHALL HAVE CLEAR PVC FILM ON ONE SIDE
6. ALL "2424" SIZE PANELS AND BELOW SHALL BE PACKAGED IN AN ENVELOPE WITH NO METAL (CLASP)
7. ALL "3020" SIZE PANELS AND ABOVE SHALL BE PACKAGED IN CARDBOARD WITH NO METAL (STAPLES)

ASSEMBLY:

1. SWING PANEL KIT INCLUDES THE FOLLOWING:
 - (1) ALUMINUM SWING PANEL
 - (1) SWING PANEL MOUNT KIT (FEPCSPMK)

SPECIAL REQUIREMENTS

THIS DRAWING IS THE SOLE AND EXCLUSIVE PROPERTY OF ROBROY ENCLOSURES. NO PART OF THIS DRAWING MAY BE REPRODUCED, DISTRIBUTED, OR PUBLICALLY DISPLAYED IN ANY FORM OR BY ANY MEANS WITHOUT THE EXPRESS WRITTEN PERMISSION OF ROBROY ENCLOSURES. ALL RIGHTS RESERVED. UNDER THE COPYRIGHT LAWS. COPYRIGHT © 2016 ROBROY ENCLOSURES

| | | | | | | | |
|------------------------------|-------------|--------------------------|-------------|---|--------------------------------|---------------|-----------------|
| NEMA 250: TYPE IEC 60529: | N/A N/A | STANDARD P/N: | PC1614SPK | ALL DIMENSIONS ARE IN INCHES UNLESS OTHERWISE SPECIFIED | TOLERANCES UNLESS SPECIFIED | .XX ± 0.03 | .XXX ± 0.010 |
| COLOR: | N/A | CUSTOMER DWG: | |  Robroy Enclosures 500 Maple Street Belding, Michigan 48809 Phone: 616-794-0700 Fax: 616-749-3378 | | | |
| COLOR STANDARD: | N/A | | | | | | |
| MATERIAL: 3003-H14 ALUMINUM | | | | | | | |
| REVISION HISTORY | | | | | | | |
| REV | DESCRIPTION | DATE | ENG | | | | |
| - | - | - | - | | | | |
| - | - | - | - | | | | |
| - | - | - | - | | | | |
| - | - | - | - | | | | |
| - | - | - | - | | | | |
| - | - | - | - | | | | |
| DRAWN BY | | DATE | CUSTOMER | DWG | | | |
| DRH | | 09/01/16 | | PC1614SPK | | | |
| SCALE | | DESCRIPTION | PART NUMBER | | | | |
| DO NOT SCALE | | STANDARD SWING PANEL KIT | FEPC1614SPK | | | | |