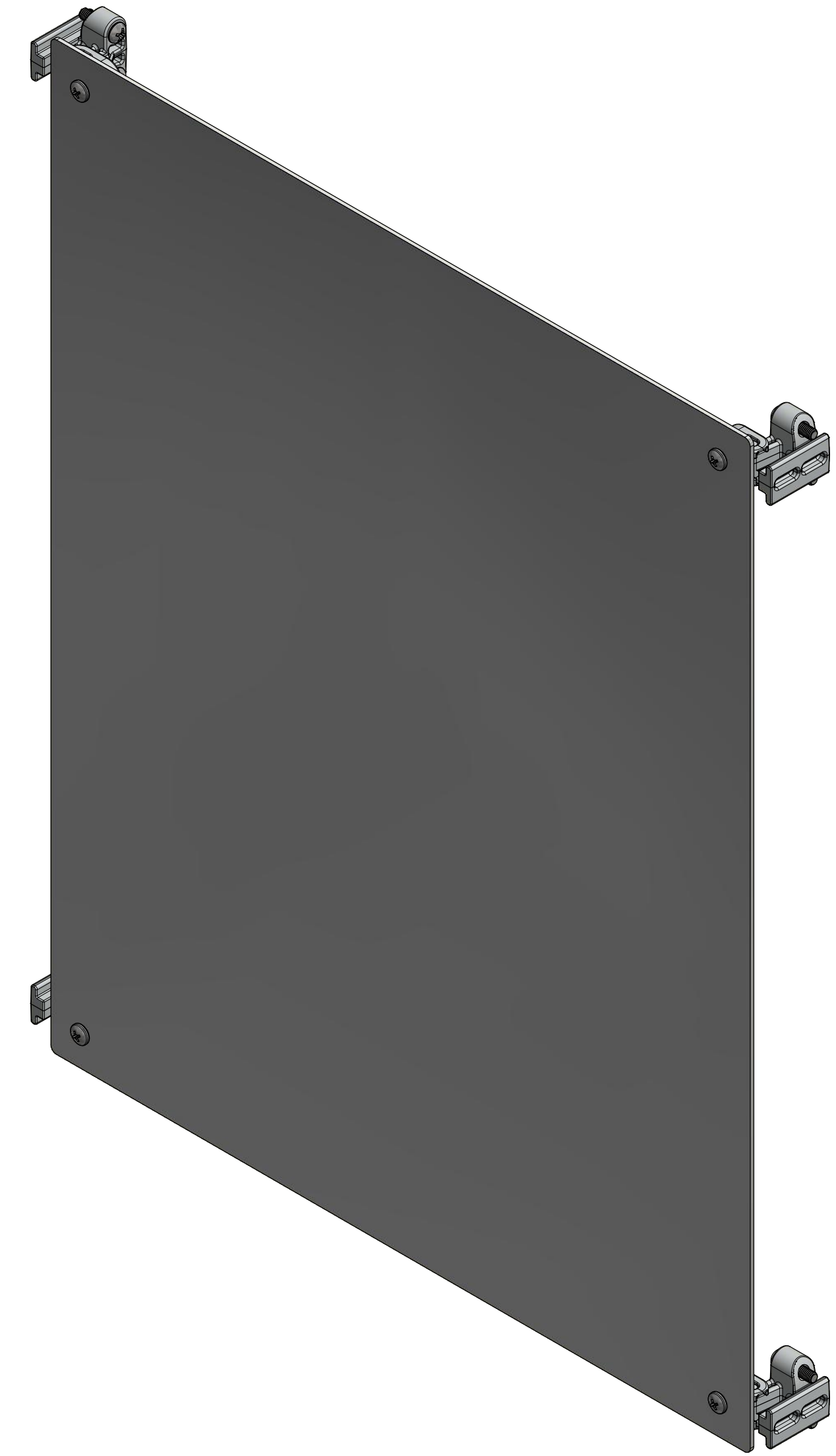


0.08  
(12 GAUGE)




FOR REFERENCE ONLY  
SWING PANEL MOUNTS SHOWN AS INSTALLED

- NOTES:**
- PANEL SHALL BE FREE FROM BURRS & SHARP EDGES
  - PANEL SHALL BE FLAT
  - MISALIGNED EDGES EXCEEDING 0.005" (STEPS) SHALL NOT BE PERMITTED
  - ALL EDGES SHALL BE SQUARE AND PARALLEL
  - PANEL SHALL HAVE PVC FILM ON ONE SIDE
  - PACKAGE IN AN ENVELOPE WITH NO METAL (CLASP)

THIS DRAWING IS THE SOLE AND EXCLUSIVE PROPERTY OF ROBROY ENCLOSURES. NO PART OF THIS DRAWING MAY BE REPRODUCED, DISTRIBUTED, OR PUBLICALLY DISPLAYED IN ANY FORM OR BY ANY MEANS WITHOUT THE EXPRESS WRITTEN PERMISSION OF ROBROY ENCLOSURES. ALL RIGHTS RESERVED. UNDER THE COPYRIGHT LAWS. COPYRIGHT © 2018 ROBROY ENCLOSURES.

- ASSEMBLY:**
- SPECIAL REQUIREMENTS**
- SWING PANEL KIT INCLUDES THE FOLLOWING:
    - (1) ALUMINUM SWING PANEL (RMAH2016SP)
    - (1) SWING PANEL MOUNT KIT (FEPCSPMK)

NEMA 250: TYPE	N/A	STANDARD P/N:	PC2016SPK	ALL DIMENSIONS ARE IN INCHES UNLESS OTHERWISE SPECIFIED	TOLERANCES UNLESS SPECIFIED	.XX ± 0.03	.XXX ± 0.010
IEC 60529:	N/A	CUSTOMER DWG:		 <b>Robroy Enclosures</b> 500 Maple Street Belding, Michigan 48809 Phone: 616-794-0700 Fax: 616-749-3378			
COLOR:	GLACIER GRAY (WPR313)						
COLOR STANDARD:	PANTONE 428 C						
MATERIAL: FIBERGLASS REINFORCED POLYESTER (FRP)							
REVISION HISTORY							
REV	DESCRIPTION	DATE	ENG				
-	-	-	-				
-	-	-	-				
-	-	-	-				
-	-	-	-				
-	-	-	-				
-	-	-	-				
DRAWN BY		DATE	CUSTOMER	DWG			
AJC		03/14/18		PC2016SPK			
SCALE		DESCRIPTION	PART NUMBER				
DO NOT SCALE		SWING PANEL KIT	FEPC2016SPK				