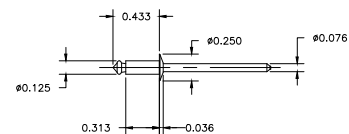
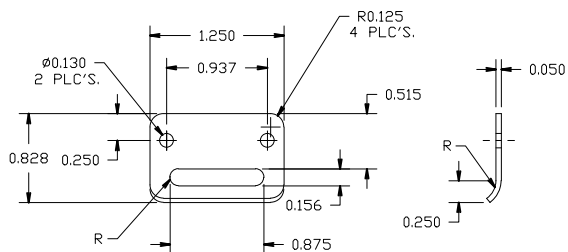


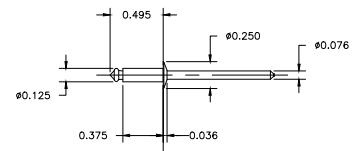
RMLATSSL



RMRIV43




RMKEEPSSL



RMRIV44

NOTES:

ALL DIMENSIONS IN MM.						TOLERANCES TWO PLACE THREE PLACE UNLESS SPECIFIED ±.020 ±.005	
NO SHARP EDGES OR BURRS, ALL COMPONENTS ARE TO BE TUMBLD.							
MATERIAL S. S. 304 DR 316				DR. BY	DATE	 STAHLIN ENCLOSURES DIVISION OF ROBROY INDUSTRIES	
LET.	REVISION RECORD	DATE	BY	CHK. BY	DATE		
				APD. BY	DATE	CUSTOMER	
						SCALE	PART NAME
							PART NO. RMSSLKIT

NOTES:

- 1) ALL DIMENSIONS ARE IN INCHES.
- 2) NO SHARP EDGES OR BURRS, ALL COMPONENTS ARE TO BE TUMBLD.
- 3) PACK 3000 PARTS IN BULK PER EXPORT CARTON. THE MAXIMUM WEIGHT PER CARTON IS 50 POUNDS.
- 4) EXPORT CARTON MUST BE CLEARLY MARKED WITH STAHLIN PART NUMBER "RMKEEPSSL".